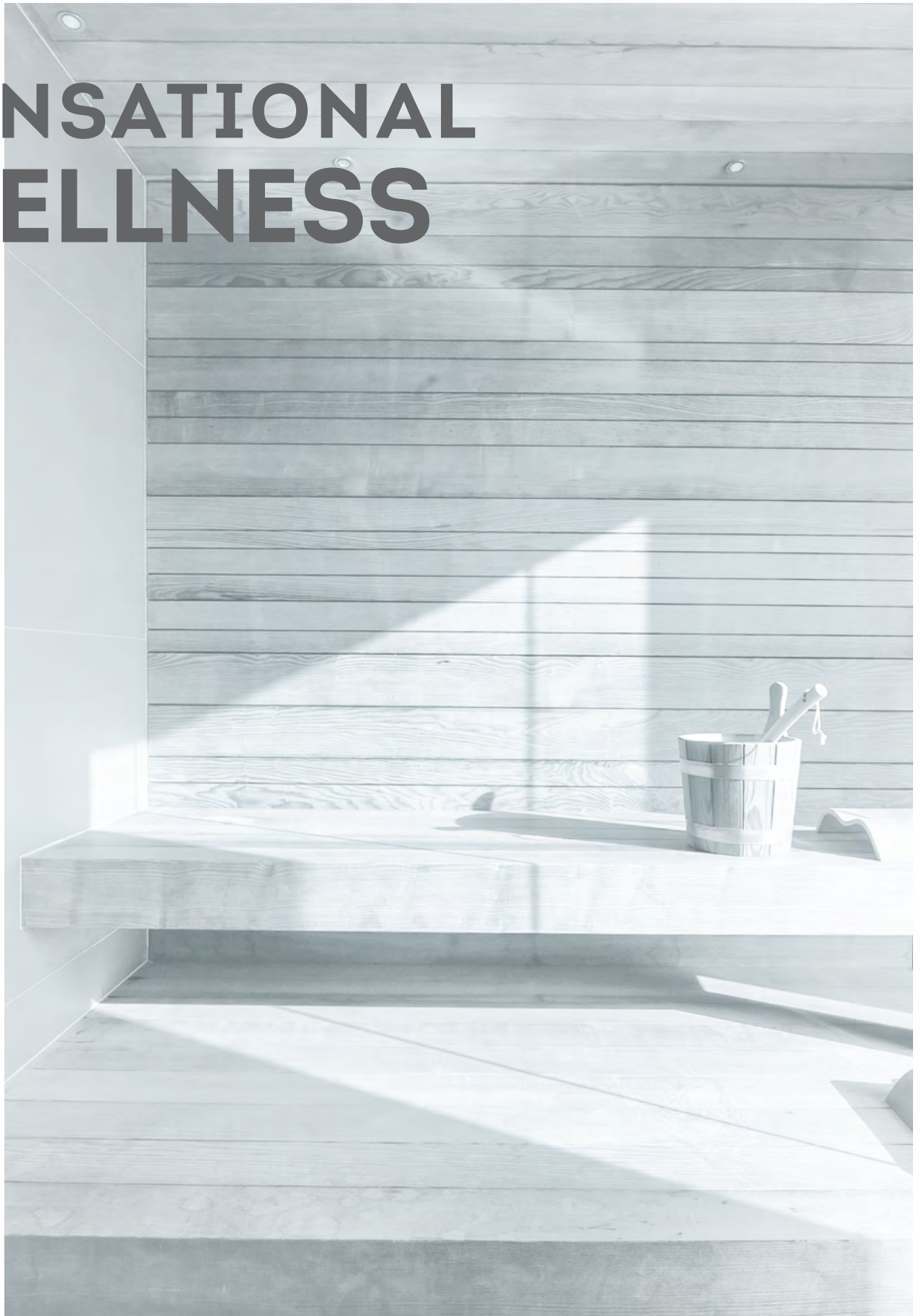


# SENSATIONAL WELLNESS



# INDEX

---

|                                |      |                        |      |
|--------------------------------|------|------------------------|------|
| MYRTHA WELLNESS                | p.04 | FINNISH SAUNA ELEGANCE | p.52 |
| DESTINATIONS                   | p.06 | FINNISH SAUNA ONSEN    | p.56 |
| WELLNESS AND WATER             | p.08 | FINNISH SAUNA EMOTION  | p.60 |
| YOUR PARTNER                   | p.10 | EMOTIONAL SHOWER       | p.64 |
| Preliminary consulting         | p.12 | Breeze                 |      |
| Design                         | p.13 | Tropical               | p.66 |
| Research and development       | p.18 | Water blade            |      |
| Production                     | p.19 | Water columns          | p.67 |
| Installation                   | p.20 | Water bucket           |      |
| Service                        | p.21 | Tropical and breeze    | p.68 |
| THE DECISION OF THE ARCHITECTS | p.22 | Water paradise         | p.69 |
| HOTEL SPA SOLUTIONS            | p.24 | ICE FOUNTAIN           | p.70 |
| HOTEL AND DAY SPA SOLUTIONS    | p.28 | SALT WALL              | p.72 |
| SUITE HOTEL SOLUTIONS          | p.30 | RELAX BEDS             | p.74 |
| SPORT CENTER & SPA             |      | Bed gran relax 5.1     | p.76 |
| FITNESS SOLUTIONS              | p.32 | Bed gran relax 5.2     | p.78 |
| HYDROMASSAGE SOLUTIONS         | p.34 | Bed gran relax 5.3     | p.80 |
| HOME SPA SOLUTIONS             | p.38 | Bed gran relax 1.0     | p.82 |
| STEAM BATH ELEGANCE            | p.44 | Bed gran relax 2.0     | p.84 |
| STEAM BATH ONSEN               | p.48 | Bed gran relax 4.0     | p.86 |
|                                |      | YOU CUBE               | p.88 |



# THE NEW UNIQUE WELLNESS BY MYRTHA

---

Our story dates back over **60 years ago**. We continue to implement Myrtha Pools' core principals of design, innovation and technology to shape water into building wellness facilities and spas.

Our Italian style of design coupled with our sleek products allows us to create **unique experiences for the individual**.

Our Wellness product line uses the same **quality and innovation** that Myrtha Pools is so widely known for throughout the industry.



# WHEN A FACILITY BECOMES AN EMOTION

---

The design of each project is first **driven by the client's needs**, wishes and available space for their facility.

We then apply the Myrtha technology to our Wellness centers by offering **unique options** that greatly exceed our client's expectations.



DAY SPA

SPAS

HOTEL &  
RESORT

HEALTH AND  
FITNESS CLUB

HOME SPA

YACHTS

CRUISE  
SHIP

CLUB HOUSE



# WELLNESS WORKING WITH WATER

---

There's no limit to what you can dream.  
**Myrtha's experience and technology**  
combines to create the perfect match for  
wellness facilities.

We provide **step-by-step support** during the  
entire process from beginning stages of design,  
recommendations for building requirements and  
through completion of installation.





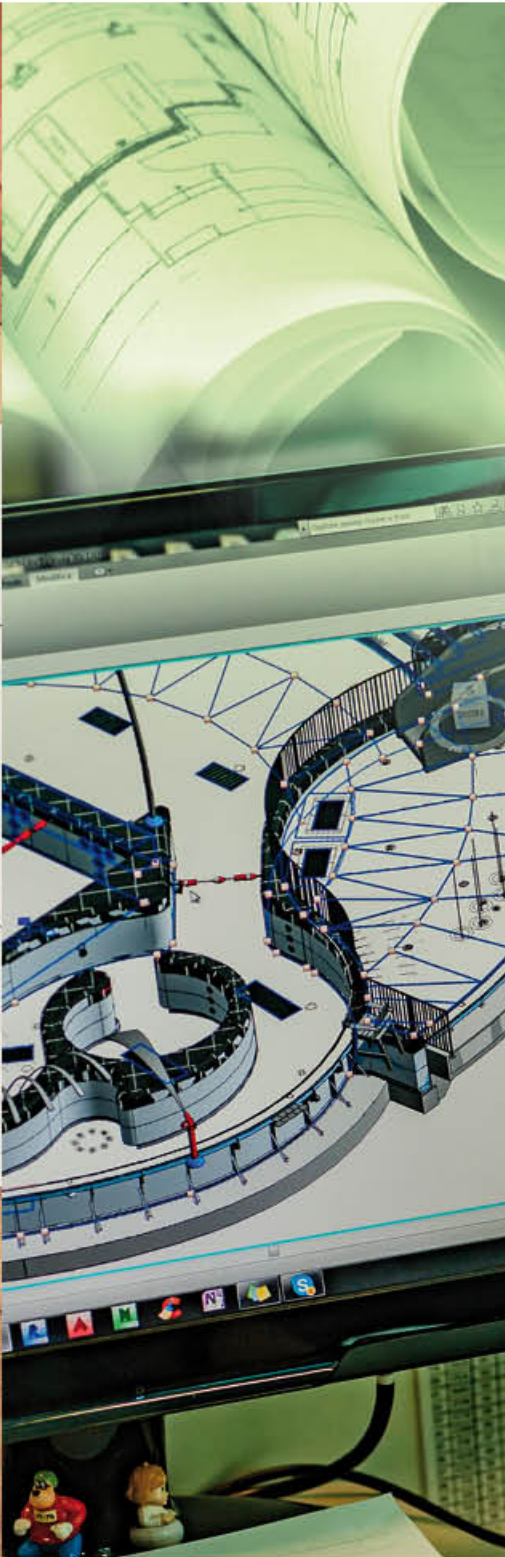
# THE IDEAL PARTNER THROUGHOUT THE ENTIRE PROJECT

---

1. Preliminary consulting



2. Design



3. Research & development



4. Production



5. Installation



6. Service





# 1.

## PRELIMINARY CONSULTING

Myrtha is able to interpret each customer's needs by providing unique solutions for their wellness, usability and aesthetics.

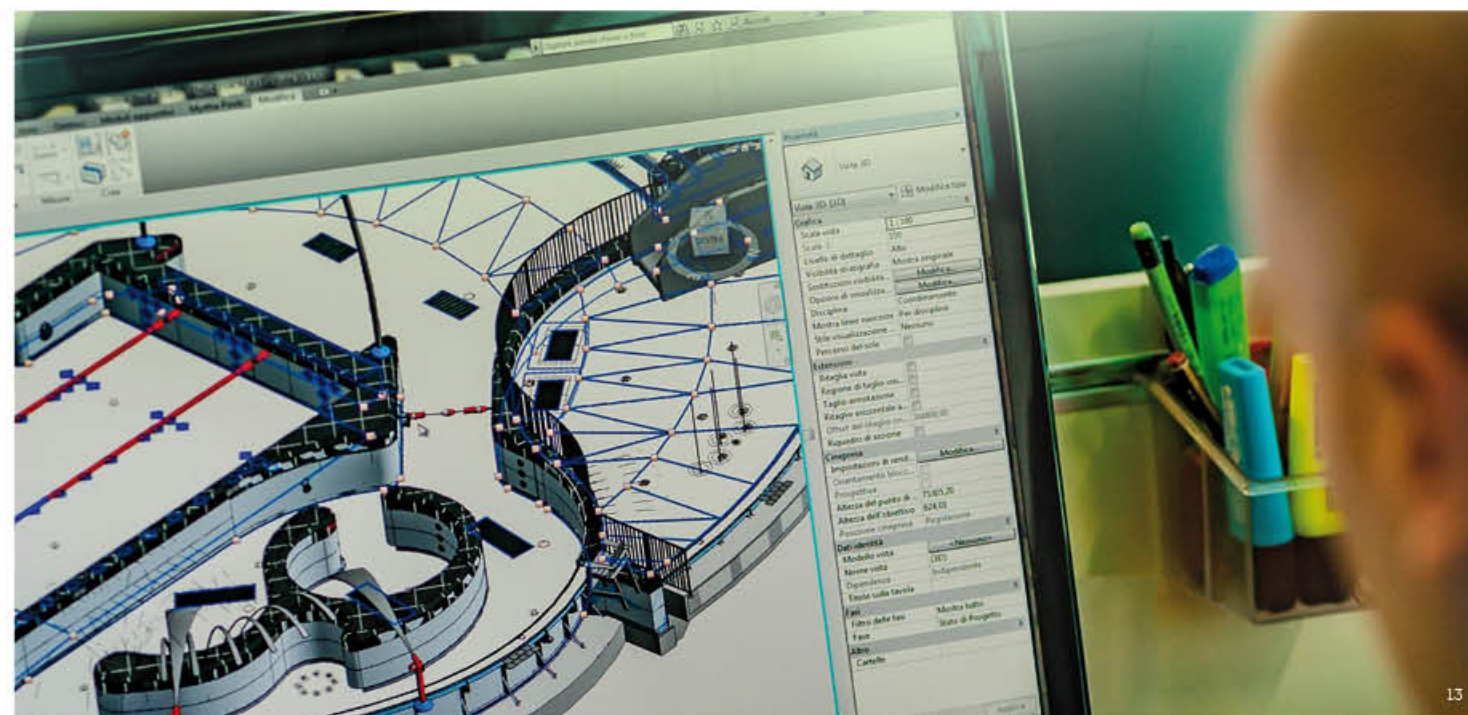
Due to **customized consulting** we offer the most **detailed options** available for the client providing captivating spaces for the user.

# 2.

## DESIGN

The company develops and engineers the project by **matching different water and wellness technologies**, improving spaces and technical areas.

**3D renderings** provide a clear vision of the project and experience before construction occurs.

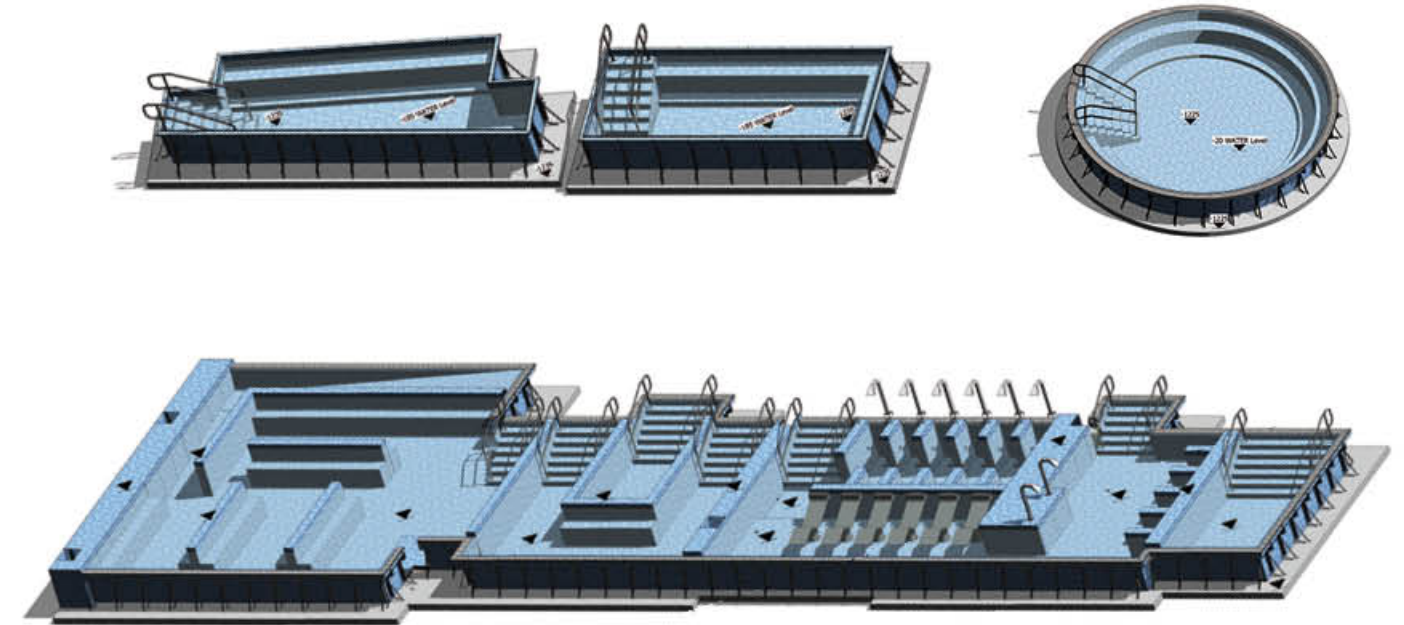
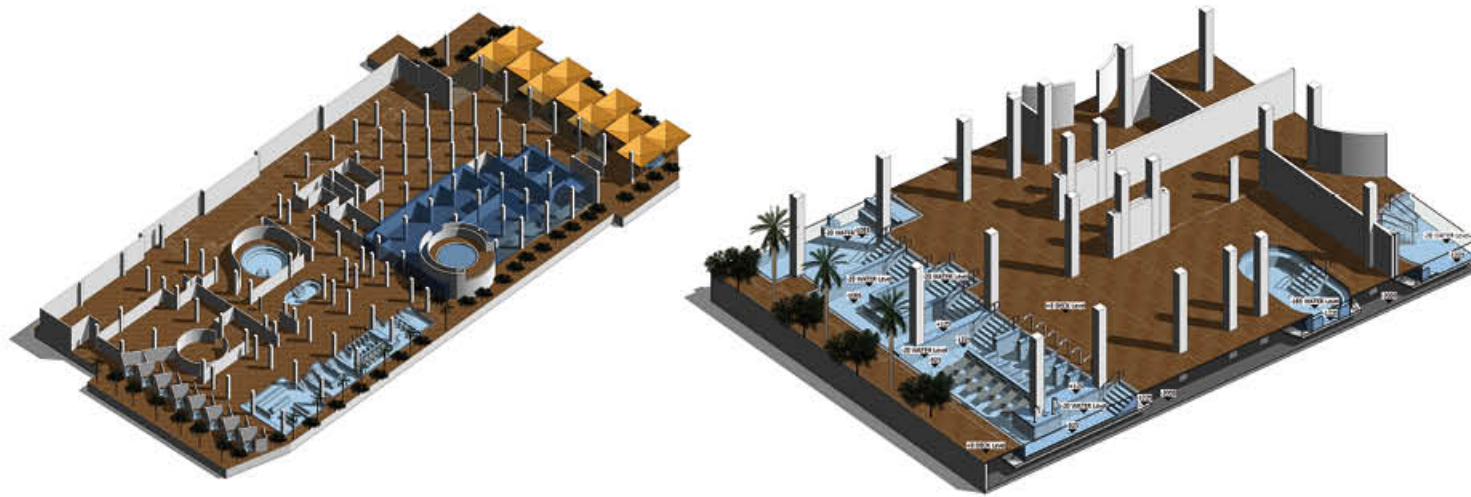




## 2.DESIGN

### WAI ARIKI SPA Rotorua, New Zealand

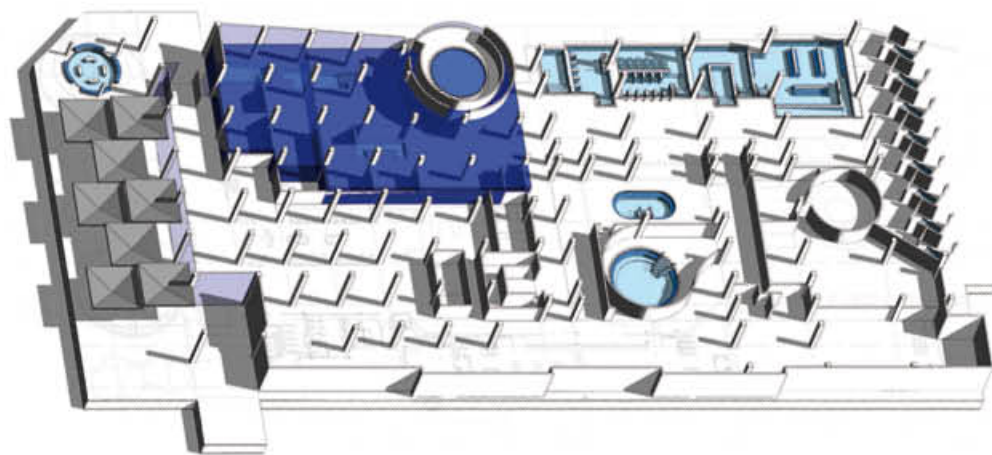
In the heart of Rotorua, the New Zealand region renowned for its thermal treatment, the company designed a spa, more than 4,000 m<sup>2</sup>. Hydromassage, Finnish sauna, bio-sauna, IR sauna, steam bath, Kneipp pools, immersion pools, emotional showers frigidarium, heated chaises lounges, mud basins and recreational pools are fitted within a unique facility in terms of sizes, technology and atmosphere. Mainly designed as a destination spa, the Wai Ariki will be able to accommodate a high daily occupancy rate.



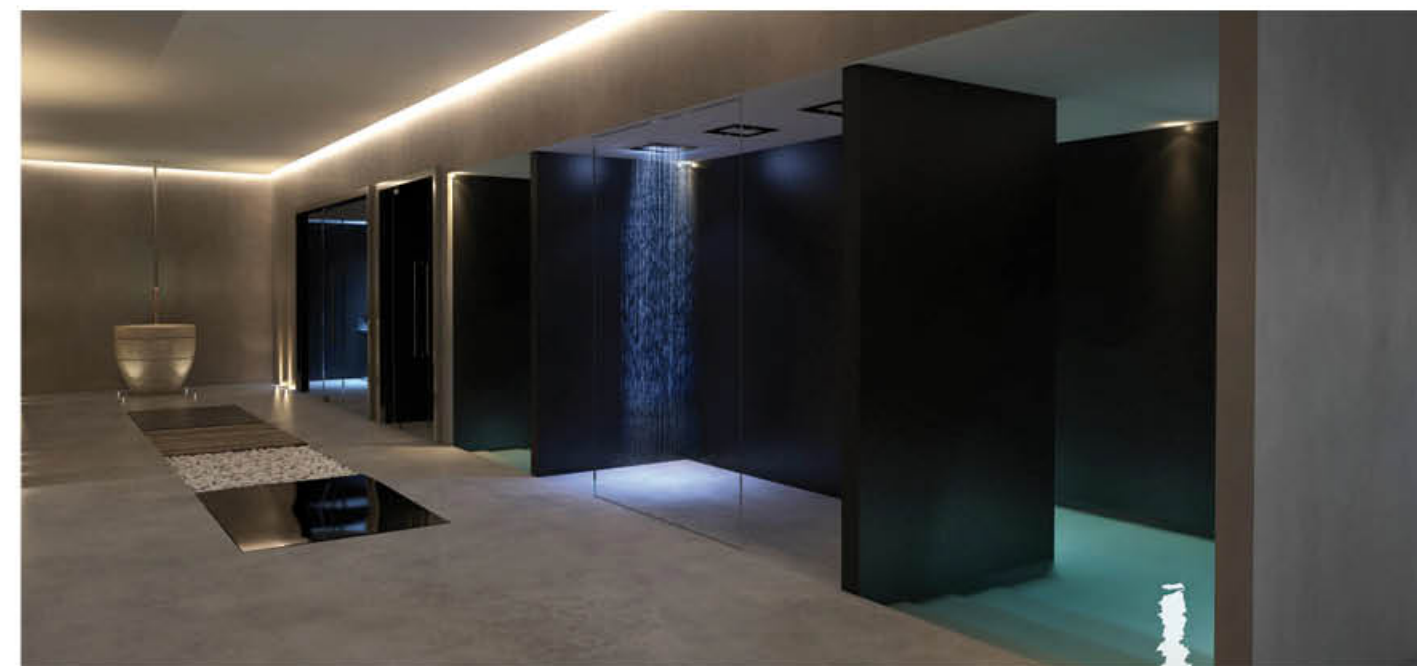


**WAI ARIKI SPA**  
Rotorua, New Zealand  
Opening: 2019  
Surface: 7.000 m<sup>2</sup>

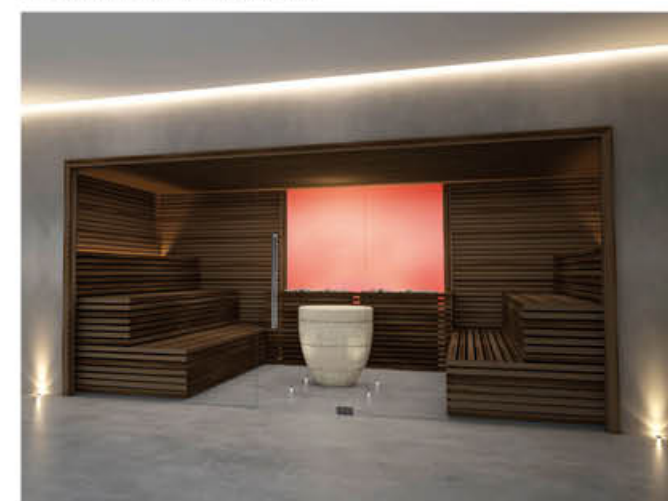
**Highlights:** integrated design, internal wellness area,  
and how the external pools fit within the unique landscape.



Steam bath, hamman and plantar pathway



Water paradise and immersion pool



Finnish spa



Frigidarium and emotional shower.



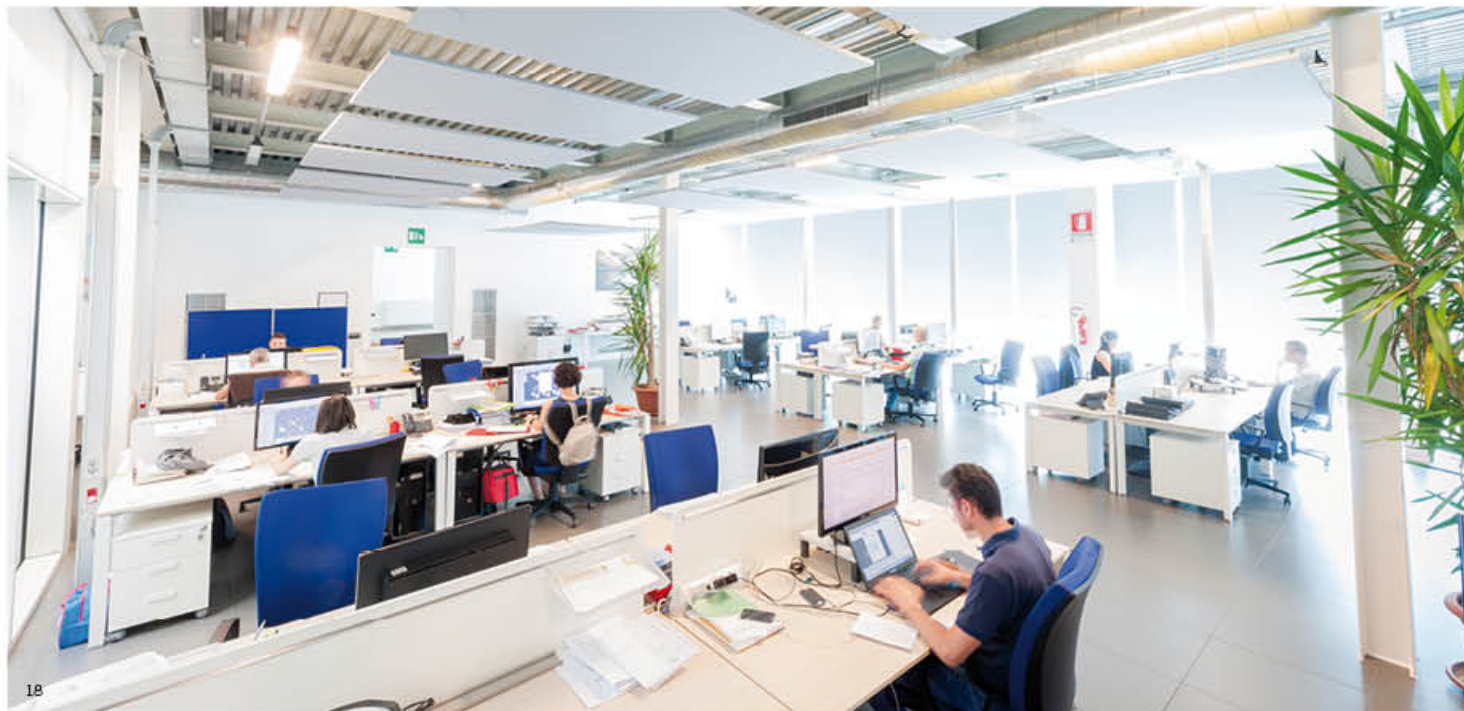
# 3.

## RESEARCH AND DEVELOPMENT

---

The technical team develops **innovative products** entirely manufactured by Myrtha.

Sleek, modern and captivating. The Myrtha Wellness product line stands out for their **handcrafted manufacturing** and **Italian technology**, which is extraordinary in terms of **quality** and attention to **detail**.



# 4.

## PRODUCTION

---

Our **integrated production** testing allows us to provide outstanding products.

An **in-house dedicated production** line allows for superior quality control.





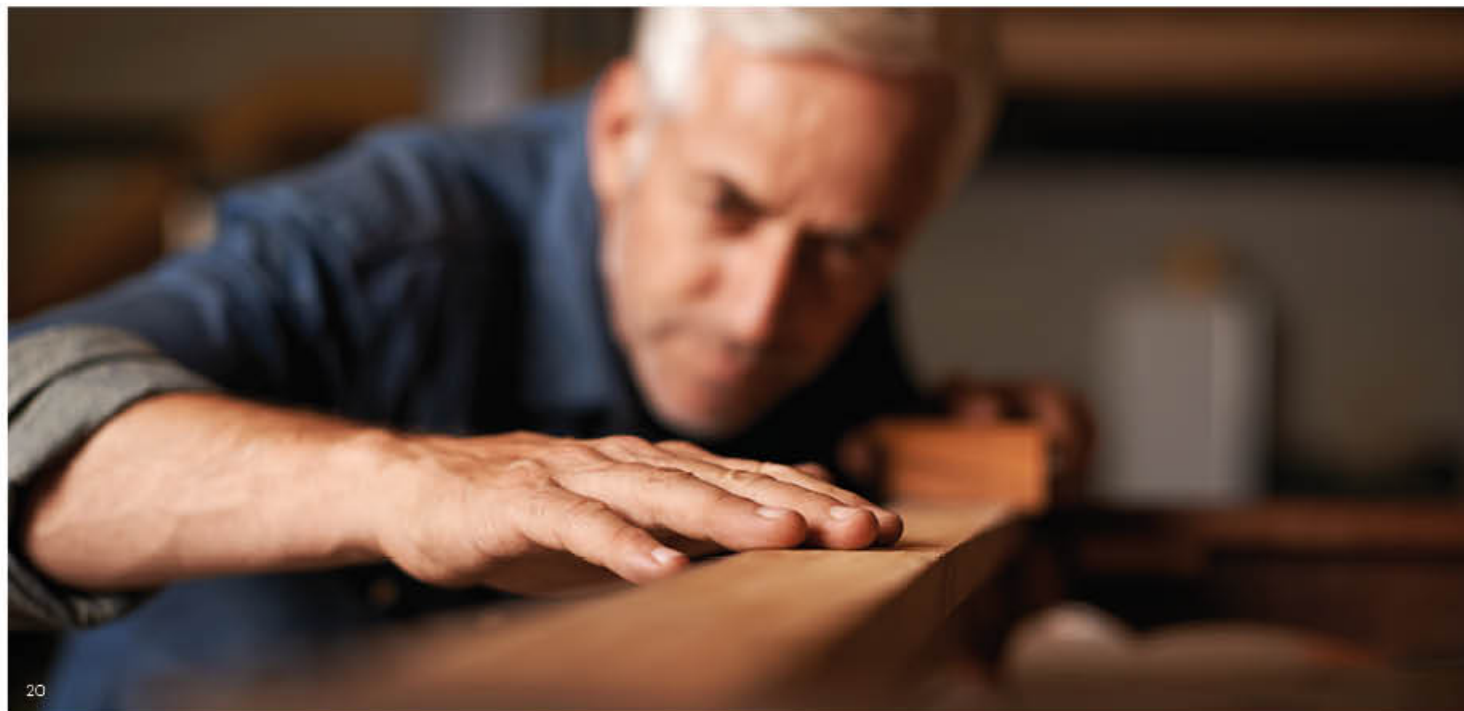
# 5.

## INSTALLATION

---

The **company's dedicated teams** are responsible for product installation and testing.

Their **technical qualifications** and problem-solving skills are improved upon in the **Pool Academy**, the company's internal training center.



# 6.

## SERVICE

---

With technical team members scattered throughout the world we have someone available to service the project **during the life of the individual products** or any other service that may be needed.





# THE DECISION OF THE ARCHITECTS

During the **creative process**, we honor the architect by creating a custom project that aligns with their vision.

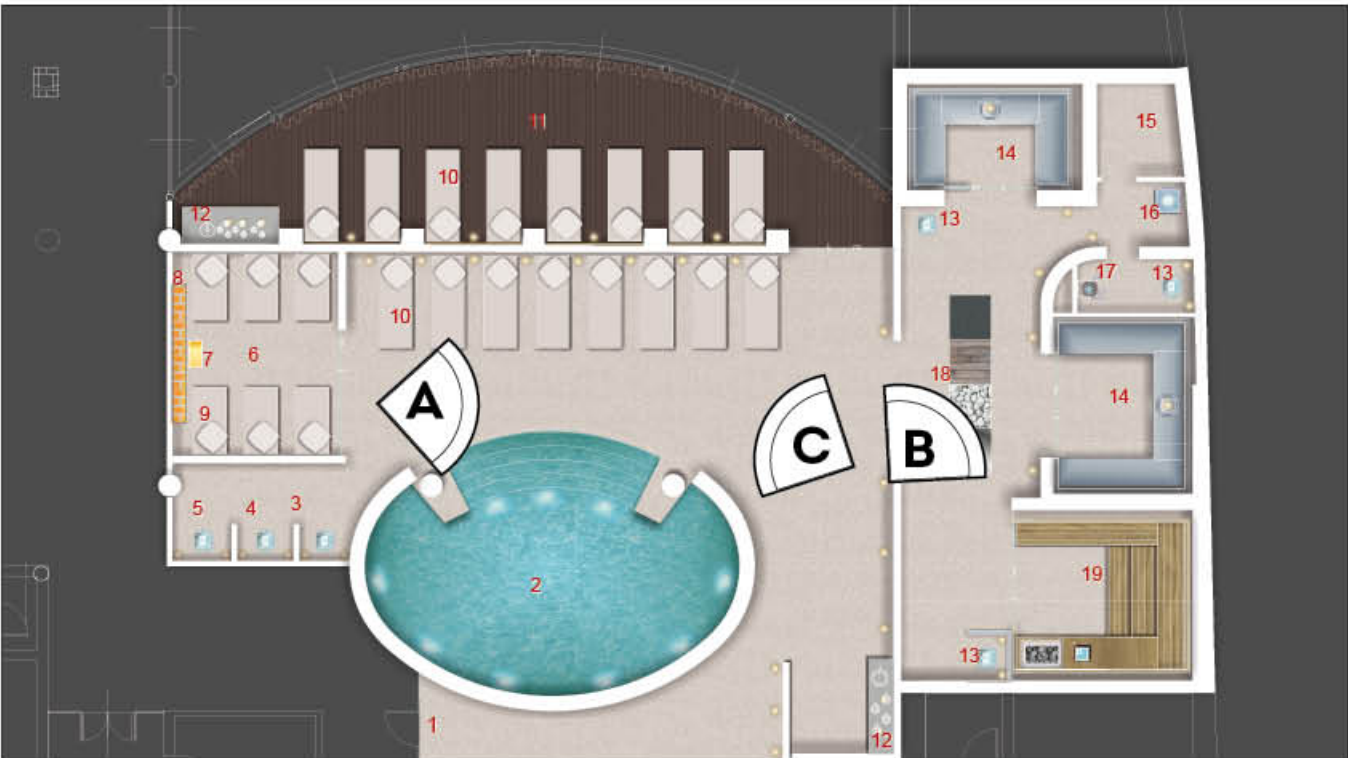
**Designers and architects from all over the world have chosen us** for our flexibility and skills with which we are able to bring together technology, functionality and aesthetics.



# HOME SPA SOLUTIONS

**VERGILIUS HOTEL SPA & BUSINESS RESORT\*\*\*\*S**  
Vicenza, Italy

A unique business resort that features a large spa of over 700 square meters and a thermal area of 300 square meters. The atmosphere is enhanced by the presence of a Finnish sauna intended for beautiful rituals, a steam bath, a soft steam bath, emotional showers, ice fountain, saline relaxation area, panoramic relaxation area, walkway, and the water paradise. The treatment area is distinguished by the presence of 8 cabins, lounging area and spacious locker rooms. Both hotel guests and locals are allowed in the spa to enjoy its many benefits.

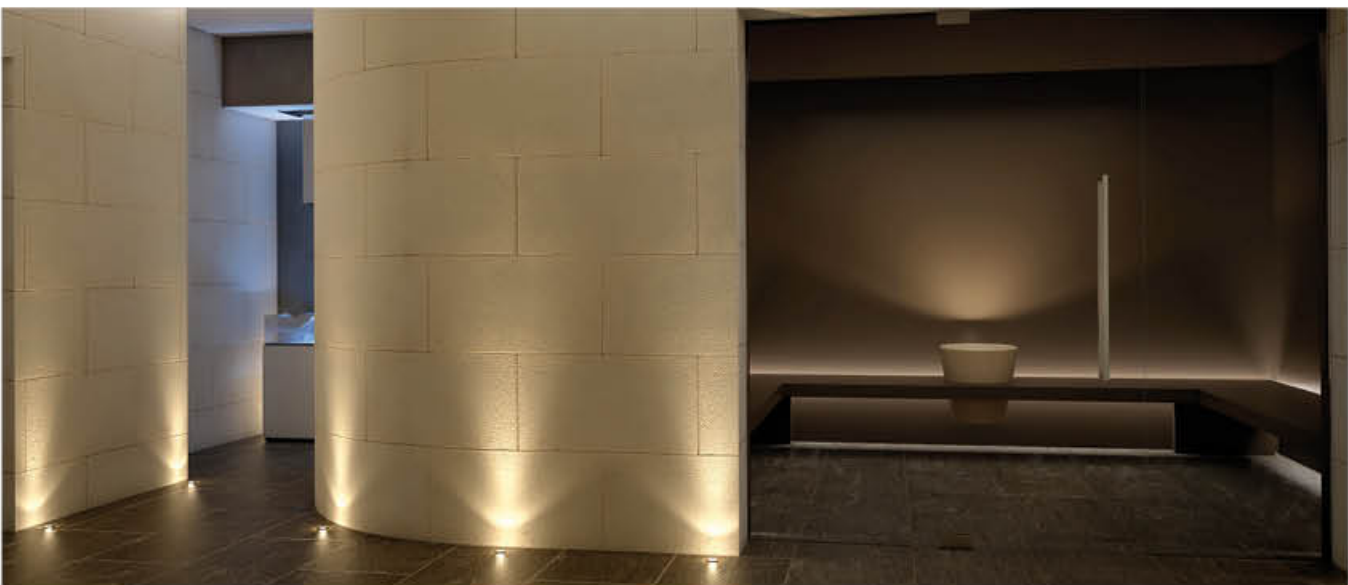


**Total surface 700 m<sup>2</sup> | Thermal area surface 300 m<sup>2</sup>**

- |                           |                      |
|---------------------------|----------------------|
| 1. Entrance               | 12. Tisanery         |
| 2. Hydromassage           | 13. Emotional shower |
| 3. 4. 5. Water paradise   | 14. Steam bath       |
| 6. Saline relaxation area | 15. Technical room   |
| 7. Saline stove           | 16. Ice fountain     |
| 8. Salt wall              | 17. Water bucket     |
| 9. 10. Relax beds         | 18. Plantar pathway  |
| 11. Dream room            | 19. Finnish sauna    |



**A** Hydromassage area



**B** Steam bath and ice fountain



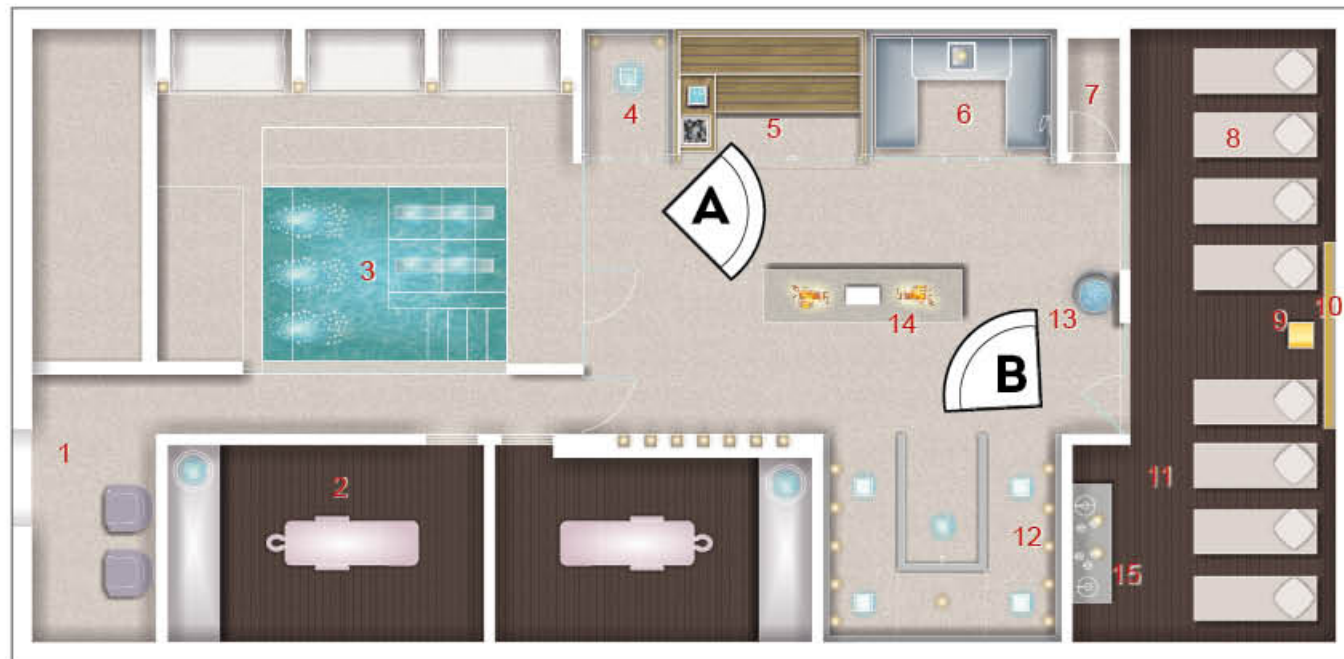
**C** Saline relaxation area and hydromassage area



# HOTEL SPA SOLUTIONS

## THE MOON BOUTIQUE HOTEL & SPA\*\*\*\*S Florence, Italy

In the historical center of Florence is a hidden gem of elegance and sophistication, The Moon Boutique Hotel & Spa. On the ground floor Myrtha built a small Wellness spa that includes two dressing rooms, two treatment rooms and a thermal area with hydromassage, Finnish sauna, steam bath, water paradise, emotional shower, ice fountain and saline relax area. Their central fireplaces are iconic, along with decorative design elements.



Total surface 183 m²

- |                         |                    |
|-------------------------|--------------------|
| 1. Entrance             | 9. Stove           |
| 2. Treatment room       | 10. Salt wall      |
| 3. Hydromassage         | 11. Relax room     |
| 4. Emotional shower     | 12. Water paradise |
| 5. Finnish sauna        | 13. Ice fountain   |
| 6. Steam bath           | 14. Fitting area   |
| 7. Technical room       | 15. Tisanery       |
| 8. Relax beds model 5.1 |                    |



**A** Finnish sauna, steam bath, ice fountain and saline relaxation room



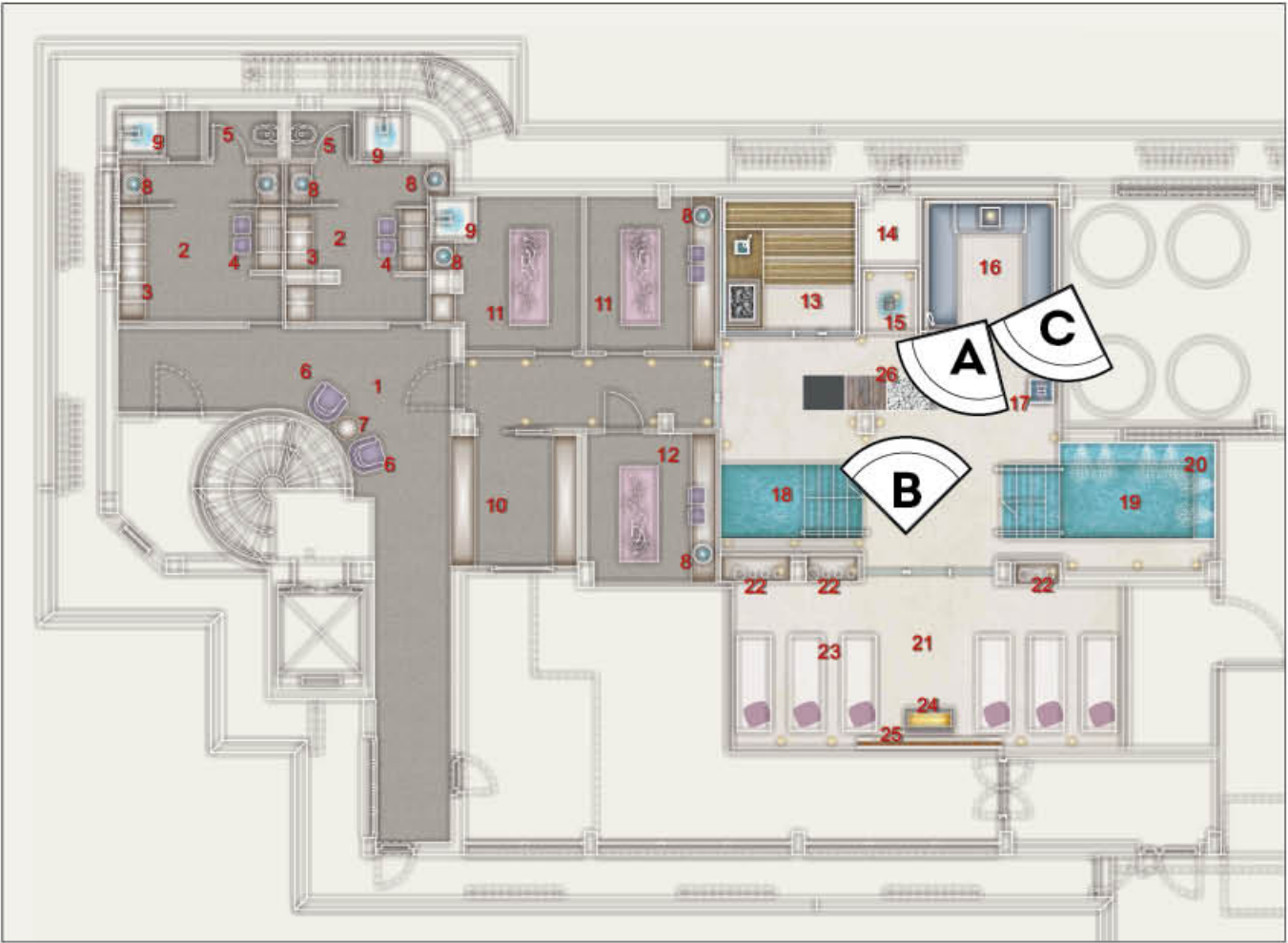
**B** Steam bath, Finnish sauna and hydromassage



# HOTEL & DAY SPA SOLUTIONS

**HOTEL & DAY SPA**  
Sabadia, Italy

L'Hotel & Day Spa located in Sabaudia has a very unique spa.  
A Finnish sauna, a steam bath, an ice fountain, a walkway, a hydromassage, a cold immersion basin and a saline relax area are the highlights of the unique spa, open to external guests as well.



**Total surface 190 m<sup>2</sup>**

- |                  |                               |                        |
|------------------|-------------------------------|------------------------|
| 1. Entrance      | 10. Reception                 | 19. Hydromassage       |
| 2. Fitting rooms | 11. Treatment rooms           | 20. Hydromassage bench |
| 3. Cabinets      | 12. Treatment rooms/warehouse | 21. Relax area         |
| 4. Hairdryer     | 13. Finnish sauna             | 22. Tisanery           |
| 5. Toilette      | 14. Technical room            | 23. Chaise lounge      |
| 6. Armchairs     | 15. Emotional shower          | 24. Saline stove       |
| 7. Table         | 16. Steam bath                | 25. Salt wall          |
| 8. Sinks         | 17. Ice fountain              | 26. Plantar pathway    |
| 9. Showers       | 18. Immersion basin           |                        |



**A** Saline relax room and immersion basins



**B** Finnish sauna, emotional shower, ice fountain, steam bath and plantar pathway



**C** Ice Fountain hydromassage and saline relax room



# HOTEL SUITE SOLUTIONS

Private well-being areas within the rooms and suites have become quite on trend for the travel and leisure market segment. A new concept of luxury and exclusivity available to the most elegant of customers.



## SUITE 1.0

Surface 28 m<sup>2</sup>

1. Entrance
2. Technical room
3. Finnish sauna
4. Bathroom
5. Shower
6. Bedroom
7. Chaise lounge



## SUITE 2.0

Surface 55 m<sup>2</sup>

1. Entrance
2. Bathroom
3. Shower
4. Living room
5. Hydromassage
6. Chaise lounge
7. Bedroom
8. Plantar pathway
9. Finnish sauna
10. Steam bath
11. Technical room



## SUITE 3.0

Superficie 64 m<sup>2</sup>

1. Entrance
2. Bathroom
3. Shower
4. Living room
5. Hydromassage
6. Chaise lounge
7. Bedroom
8. Plantar pathway
9. Finnish sauna
10. Steam bath
11. Technical room



SUITE 1.0



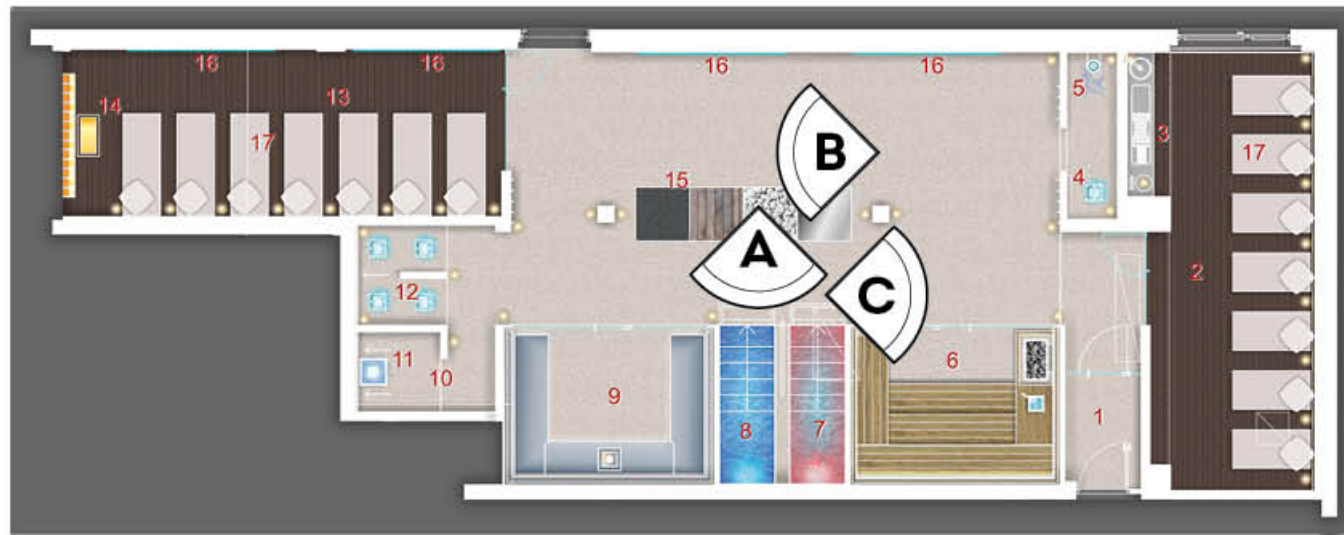
SUITE 3.0



# SPORT CENTER & SPA FITNESS SOLUTIONS

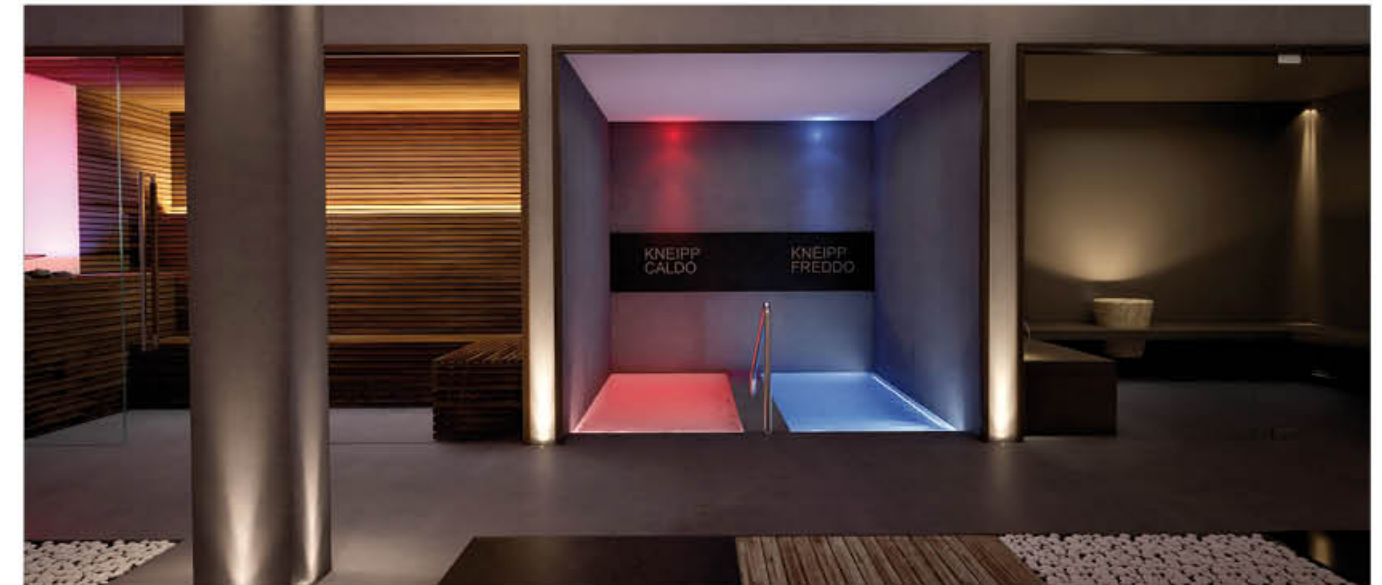
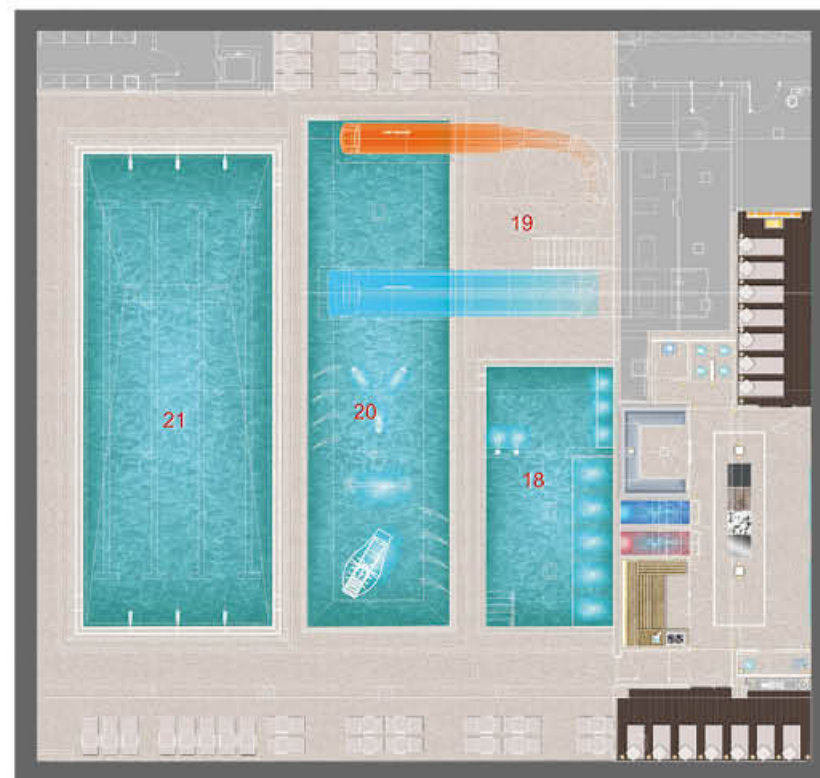
## SPORT CENTRE AQUAMORE Villafranca, Italy

The Sport Centre Aquamore sits on over 2,500 square meters with a covered wet area dividing the swimming area into leisure for families (swimming pool, spray park, and hydromassage) and a thermal spa that encompasses more than 200 square meters with a dream room.



Total surface of the wet area 2500 m<sup>2</sup> | Surface of the wet leisure area 1000 m<sup>2</sup> | Thermal area surface 200 m<sup>2</sup>

1. Entrance
2. Dream room
3. Tisanery
4. Emotional shower
5. Water bucket
6. Finnish sauna
7. Cold immersion tank
8. Hot immersion tank
9. Steam bath
10. Frigidarium
11. Ice fountain
12. Water paradise
13. Saline relaxation room
14. Salt wall
15. Plantar pathway
16. Projections
17. Relax beds
18. Hydromassage
19. Slides
20. Spray Park
21. Swimming pool



A Finnish sauna, Kneipp and immersion basins, steam bath



B Steam bath, water paradise, relax and saline area



C Plantar pathway, Finnish sauna, dream room and emotional shower



# HYDROMASSAGE SOLUTIONS



**VIRGIN ACTIVE** Brescia, Italy



**PORSCHE DESIGN TOWER** Miami, Florida



**VIRGIN ACTIVE** Milan, Italy



**AQUAGRANDA ACTIVE YOU** Livigno, Italy





**PRIVATE RESIDENCE** Vicenza, Italy



**VIRGIN ACTIVE** Milan, Italy



**SLS BRICKELL HOTEL & RESIDENCE** Miami, Florida - interiors designed by Philippe Starck



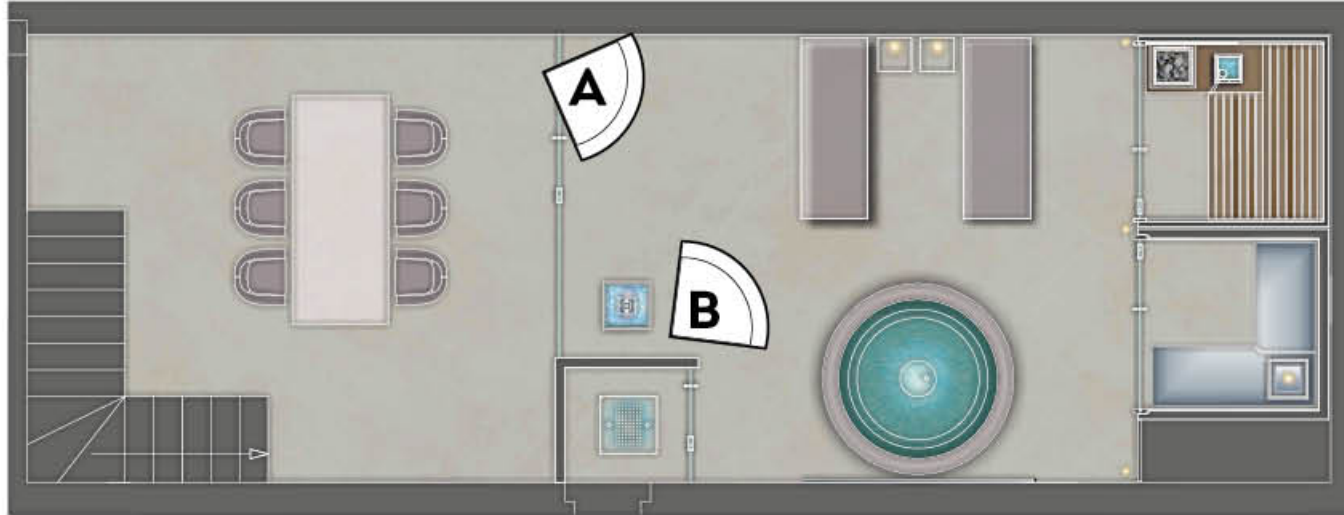
**VIRGIN ACTIVE** Bangkok, Thailand



# HOME SPA SOLUTIONS

Private wellness areas not only at home but in the hotel as well.

The private spa, besides decorating rooms and suites with the highest possible comfort, they are designed as social spas, that is a place with an intimate atmosphere, where friends decided to share relax and well-being



B



A



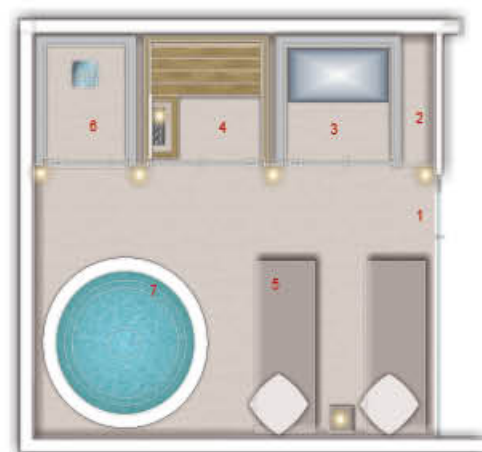
# HOME SPA SOLUTIONS



**HOME 1.0**  
Surface 17.2 m<sup>2</sup>  
1. Entrance  
2. Technical room  
3. Steam bath  
4. Finnish sauna  
5. Chaise lounge



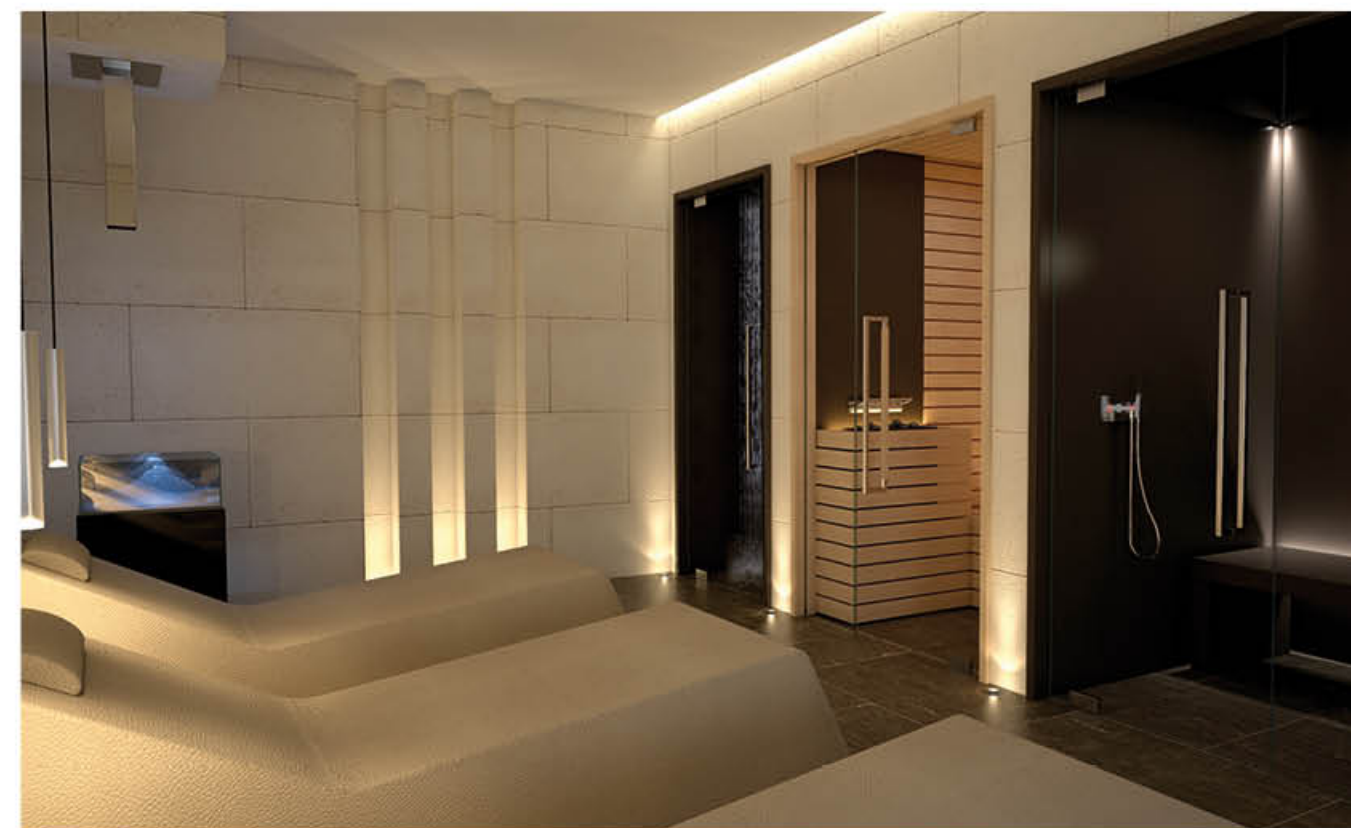
**HOME 2.0**  
Surface 22.7 m<sup>2</sup>  
1. Entrance  
2. Technical room  
3. Steam bath  
4. Finnish sauna  
5. Chaise lounge  
6. Emotional shower  
7. Ice fountain



**HOME 3.0**  
Surface 22.7 m<sup>2</sup>  
1. Entrance  
2. Technical room  
3. Steam bath  
4. Finnish sauna  
5. Chaise lounge  
6. Emotional shower  
7. Hydromassage



**HOME 4.0**  
Surface 38.5 m<sup>2</sup>  
1. Entrance  
2. Technical room  
3. Steam bath  
4. Finnish sauna  
5. Chaise lounge  
6. Emotional shower  
7. Hydromassage



**HOME 2.0**



**HOME 4.0**



**SLEEK AND SMOOTH  
DOWN TO OUR**

**STAINLESS STEEL CORE**





# STEAM BATH ELEGANCE

---

The ideal temperature for a steam bath to deeply purify the skin is at 43°-45°C with 98% humidity. Fragrances, music and LED enhance your experience.



\* The product images are not binding



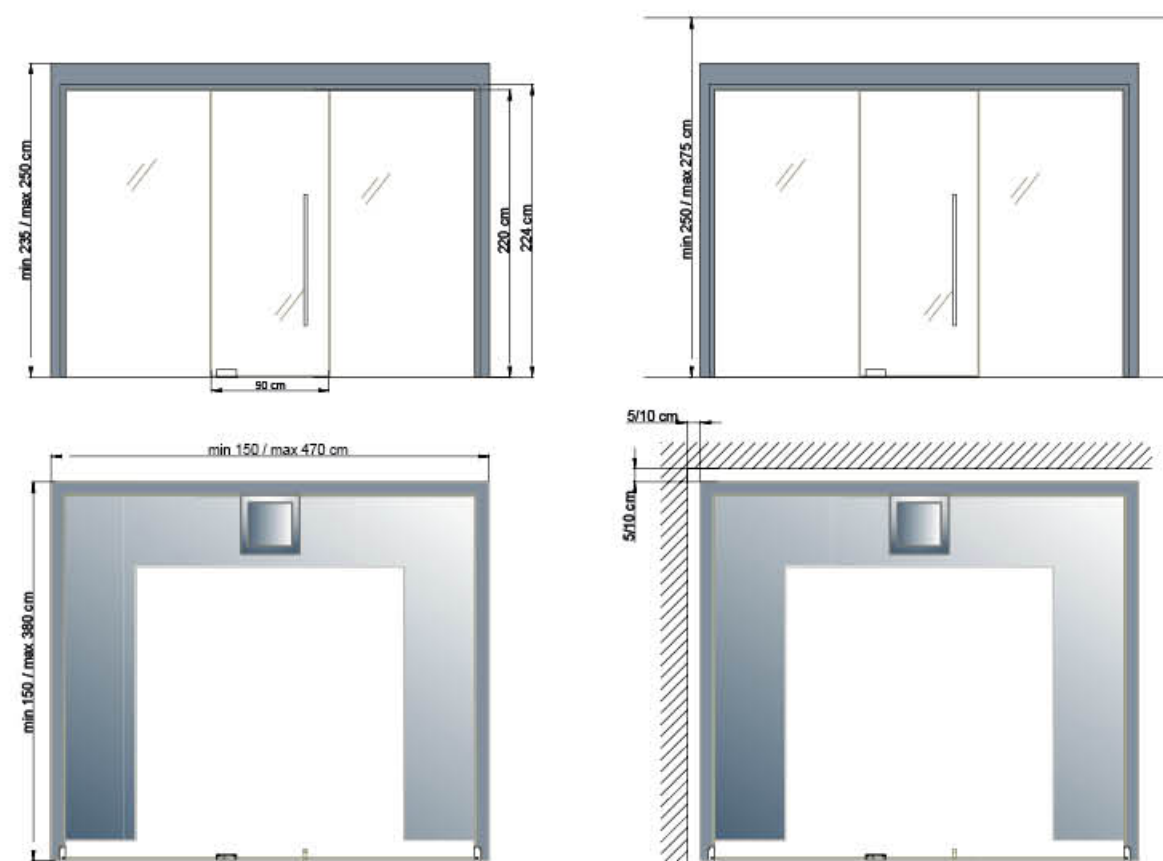
## AVAILABLE SIZES

| EXTERNAL SIZES<br>L x P x H (cm) | m <sup>2</sup> | MINIMUM<br>INTERNAL HEIGHT (cm) | PEOPLE | HEATER<br>CONSUMPTIONS (kW) | MAXIMUM<br>CONSUMPTIONS (kW) |
|----------------------------------|----------------|---------------------------------|--------|-----------------------------|------------------------------|
| 150 x 150 x 235                  | 2,3            | 220,0                           | 2      | 3,5                         | 4,0                          |
| 200 x 150 x 235                  | 3,0            | 220,0                           | 2/3    | 6,0                         | 6,5                          |
| 200 x 200 x 235                  | 4,0            | 220,0                           | 3      | 6,0                         | 6,5                          |
| 245 x 200 x 235                  | 4,9            | 220,0                           | 4      | 8,0                         | 8,5                          |
| 245 x 245 x 235                  | 5,9            | 220,0                           | 6      | 10,0                        | 10,5                         |
| 290 x 245 x 235                  | 7,1            | 220,0                           | 7      | 12,0                        | 12,5                         |
| 290 x 290 x 240                  | 8,4            | 220,0                           | 8      | 12,0                        | 12,5                         |
| 335 x 290 x 240                  | 9,7            | 220,0                           | 9      | 12,0                        | 12,5                         |
| 425 x 290 x 245                  | 12,3           | 220,0                           | 10     | 18,0                        | 18,5                         |
| 335 x 335 x 245                  | 11,2           | 220,0                           | 10     | 18,0                        | 18,5                         |
| 380 x 335 x 245                  | 12,7           | 220,0                           | 10     | 18,0                        | 18,5                         |
| 380 x 380 x 245                  | 14,4           | 220,0                           | 13     | 18,0                        | 18,5                         |
| 425 x 335 x 250                  | 14,2           | 220,0                           | 12     | 18,0                        | 18,5                         |
| 425 x 380 x 250                  | 16,1           | 220,0                           | 16     | 24,0                        | 24,5                         |
| 470 x 380 x 250                  | 17,9           | 220,0                           | 18     | 24,0                        | 24,5                         |

## DESIGN

|                                  |   |
|----------------------------------|---|
| DIMENSIONS (cm)                  | See table.  |
| NUMBER OF PEOPLE (max)           | See table.  |
| COVERING OF<br>THE INTERNAL WALL | Not covered.<br>Waterproofed and ready to be covered.   |
| INTERNAL CEILING                 | * Painted.<br>Vaulted ceiling to avoid dripping.  |
| BENCHES                          | Not covered.<br>Waterproofed and ready to be covered.   |
| STEAM BOX                        | Square steam box, integrated into the benches, waterproofed and ready to be covered.  |
| DOOR                             | In tempered glass, 10 mm thick.<br>Sizes 90 x 220 cm.<br>Hydraulic pivoting hinges including closing speed adjustment and the end clock of the leaf.<br>The door can remain open if the opening angle is more than 80°. |
| HANDLE                           | Model Onsen: in steel - 100 cm long, square section.  |
| LIGHTING                         | LED strip under the bench - 2/4 LED on the ceiling at the corners.  |
| FRONT WALL                       | *Standard model: with no front glass wall.<br>*Panoramic model: with front glass wall in tempered glass, 10 mm thick, crushed-treated.  |
| EXTERNAL FRAME (OPTIONAL)        | *4 cm thick, painted.   |
| ACCESSORIES                      | n. 1/4 wall shower heads, cold water only with antifungal hose.   |
| AROMATHERAPY                     | Metering pump for the aromatic essence.   |
| MUSIC                            | Audio speakers to be connected to the principal customer source.  |

## DIMENSIONS



## TECHNICAL DATA SHEET

|                                      |   |
|--------------------------------------|---|
| STRUCTURE                            | Modular self-standing structure made of insulated prefab high-density panels 100 mm thick, fitted with aluminium frames with male and female connections to ensure high stability.<br>The structural panels are fitted with installations (electric and hydraulic), levelled with cement mortar, waterproofed and ready to be covered.<br>Benches made of high density insulated material, levelled with cement mortar, waterproofed and ready to be covered.<br>External finish raw.<br>Base structure in stainless steel. |
| TECHNOLOGY                           | Steam bath.   |
| TEMPERATURE                          | 43°-45° C   |
| RELATIVE HUMIDITY                    | 98%   |
| HEATING                              | *Ventilated steam technology: Vent or Vent Plus.<br>Steam and air are mixed by Myrtha Wellness automatic system.<br>Steam generator.<br>Temperature management probe.<br>Air inlet and outlet installation.<br>Electronic control unit to manage steam, the ventilation unit, aromatic essences and lighting.   |
| STEAM GENERATOR<br>CONSUMPTIONS (kW) | See table.  |
| MAXIMUM CONSUMPTIONS (kW)            | See table.  |
| VOLTAGE                              | 400 V three-phase.  |
| SAFETY                               | Internal emergency button to be connected to an external alarm device (not supplied).   |
| AIR RECYCLING                        | Automated.  |

\*Item to be defined



# STEAM BATH ONSEN

From the ancient Roman and Byzantine cultures to the Japanese and Mediterranean traditions, the steam bath is still a present ritual that is more and more appreciated each day. Minimal, refined accessories and finishes enrich the Onsen model.



\*The product images are not binding

## AVAILABLE SIZES

| EXTERNAL SIZES<br>L x P x H (cm) | m²   | MINIMUM<br>INTERNAL HEIGHT (cm) | PEOPLE | HEATER<br>CONSUMPTIONS (kW) | MAXIMUM<br>CONSUMPTIONS (kW) |
|----------------------------------|------|---------------------------------|--------|-----------------------------|------------------------------|
| 150 x 150 x 235                  | 2,3  | 220,0                           | 2      | 3,5                         | 4,0                          |
| 200 x 150 x 235                  | 3,0  | 220,0                           | 2/3    | 6,0                         | 6,5                          |
| 200 x 200 x 235                  | 4,0  | 220,0                           | 3      | 6,0                         | 6,5                          |
| 245 x 200 x 235                  | 4,9  | 220,0                           | 4      | 8,0                         | 8,5                          |
| 245 x 245 x 235                  | 5,9  | 220,0                           | 6      | 10,0                        | 10,5                         |
| 290 x 245 x 235                  | 7,1  | 220,0                           | 7      | 12,0                        | 12,5                         |
| 290 x 290 x 240                  | 8,4  | 220,0                           | 8      | 12,0                        | 12,5                         |
| 335 x 290 x 240                  | 9,7  | 220,0                           | 9      | 12,0                        | 12,5                         |
| 425 x 290 x 245                  | 12,3 | 220,0                           | 10     | 18,0                        | 18,5                         |
| 335 x 335 x 245                  | 11,2 | 220,0                           | 10     | 18,0                        | 18,5                         |
| 380 x 335 x 245                  | 12,7 | 220,0                           | 10     | 18,0                        | 18,5                         |
| 380 x 380 x 245                  | 14,4 | 220,0                           | 13     | 18,0                        | 18,5                         |
| 425 x 335 x 250                  | 14,2 | 220,0                           | 12     | 18,0                        | 18,5                         |
| 425 x 380 x 250                  | 16,1 | 220,0                           | 16     | 24,0                        | 24,5                         |
| 470 x 380 x 250                  | 17,9 | 220,0                           | 18     | 24,0                        | 24,5                         |

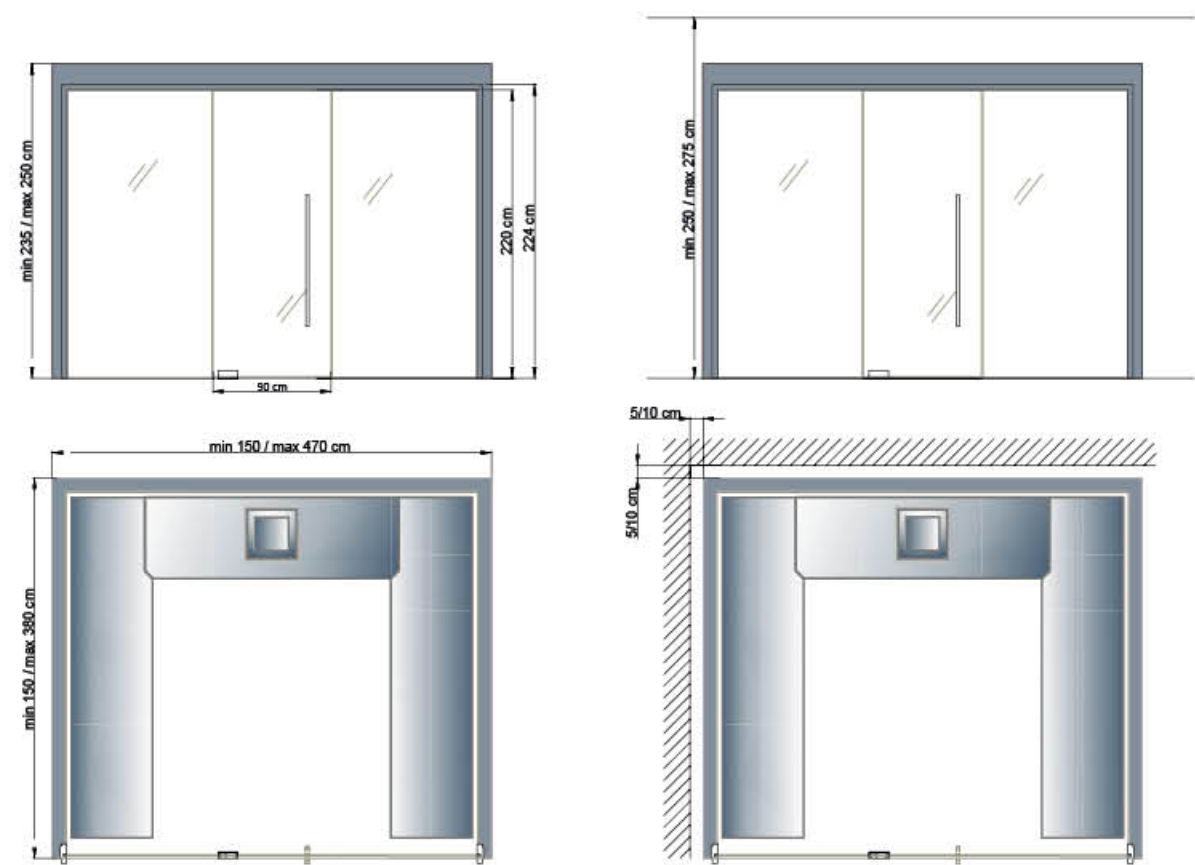
## DESIGN

|                               |   |
|-------------------------------|---|
| DIMENSIONS (cm)               | See table.  |
| NUMBER OF PEOPLE (max)        | See table.  |
| COVERING OF THE INTERNAL WALL | Waterproofed and covered.<br>*Available covering: back-painted glass, 6 mm thick white or black - ceramics, 3 mm thick, white, black or brown.  |
| INTERNAL CEILING              | * In aluminium painted white or black.<br>Inclined elements to avoid dripping.  |
| BENCHES                       | *In solid surface, white, black or brown.<br>Removable.   |
| STEAM BOX                     | Square steam box in solid surface, white, black or brown, integrated into the benches.  |
| DOOR                          | In tempered glass, 10 mm thick.<br>Sizes 90 x 220 cm.<br>Hydraulic pivoting hinges including closing speed adjustment and the end clock of the leaf.<br>The door can remain open if the opening angle is more than 80°. |
| HANDLE                        | Model Onsen: in steel - 10 cm long, square section.   |
| LIGHTING                      | LED strip under the bench - 2/4 LED on the ceiling at the corners and 2 LED in the steam box.   |
| FRONT WALL                    | *Standard model: with no front glass wall.<br>*Panoramic model: with front glass wall in tempered glass. 10 mm thick, crushed-treated.  |
| EXTERNAL FRAME                | *4 cm thick in solid surface.   |
| ACCESSORIES                   | n. 1/4 wall shower heads, cold water only with antifungal hose.   |
| AROMATHERAPY                  | Dosing pump for aromatic essence.   |
| MUSIC                         | Audio speakers to be connected to the principal customer source.  |

\*Item to be defined



DIMENSIONS



TECHNICAL DATA SHEET

|                                   |  |
|-----------------------------------|--|
| STRUCTURE                         | Modular self-standing structure made of insulated prefab high-density panels 100 mm thick, fitted with aluminium frames with male and female connections to ensure high stability.<br>The structural panels are fitted with installations (electric and hydraulic), levelled with cement mortar, waterproofed and ready to be covered.<br>Benches made of solid surface.<br>External finish raw.<br>Base structure in stainless steel. |
| TECHNOLOGY                        | Steam bath.  |
| TEMPERATURE                       | 43°-45° C  |
| RELATIVE HUMUDITY                 | 98%  |
| HEATING                           | *Ventilated steam technology: Vent or Vent Plus.<br>Steam and air are mixed by Myrtha Wellness automatic system.<br>Steam generator.<br>Temperature management probe.<br>Air inlet and outlet installation.<br>Electronic control unit to manage steam, the ventilation unit, aromatic essences and lighting.  |
| STEAM GENERATOR CONSUMPTIONS (kW) | See table.   |
| MAXIMUM CONSUMPTIONS (kW)         | See table.   |
| VOLTAGE                           | 400 V three-phase.   |
| SAFETY                            | Internal emergency button to be connected to an external alarm device (not supplied).  |
| AIR RECYCLING                     | Automated.   |

\*Item to be defined





# FINNISH SAUNA ELEGANCE

Essential in terms of lines and enriched by lights and fragrances. Elegance is the classic dry sauna typical of the Finnish tradition, whose temperatures vary between 90° and 100°C.



\*The product images are not binding

## AVAILABLE SIZES

| EXTERNAL SIZES<br>L x P x H (cm) | m²   | INTERNAL<br>HEIGHT (cm) | BENCH<br>LEVELS | PEOPLE | HEATER<br>CONSUMPTIONS (kW) | MAXIMUM<br>CONSUMPTIONS (kW) |
|----------------------------------|------|-------------------------|-----------------|--------|-----------------------------|------------------------------|
| 150 x 150 x 235                  | 2,3  | 224,0                   | 1,0             | 1/2    | 4,0                         | 4,5                          |
| 150 x 150 x 235                  | 2,3  | 224,0                   | 2,0             | 1/2    | 4,0                         | 4,5                          |
| 200 x 150 x 235                  | 3,0  | 224,0                   | 1,0             | 2/3    | 4,0                         | 4,5                          |
| 200 x 150 x 235                  | 3,0  | 224,0                   | 2,0             | 2/3    | 4,0                         | 4,5                          |
| 200 x 200 x 235                  | 4,0  | 224,0                   | 2,0             | 4/5    | 6,0                         | 6,5                          |
| 245 x 200 x 235                  | 4,9  | 224,0                   | 2,0             | 5/6    | 7,5                         | 8,0                          |
| 245 x 245 x 235                  | 5,9  | 224,0                   | 2,0             | 6/7    | 9,0                         | 9,5                          |
| 290 x 245 x 235                  | 7,1  | 224,0                   | 2,0             | 7/8    | 9,0                         | 9,5                          |
| 290 x 290 x 235                  | 8,4  | 224,0                   | 2,0             | 8/9    | 12,0                        | 12,5                         |
| 290 x 290 x 235                  | 8,4  | 224,0                   | 3,0             | 8/9    | 12,0                        | 12,5                         |
| 335 x 290 x 235                  | 9,7  | 224,0                   | 2,0             | 9/10   | 15,0                        | 15,5                         |
| 335 x 290 x 235                  | 9,7  | 224,0                   | 3,0             | 9/10   | 15,0                        | 15,5                         |
| 425 x 290 x 235                  | 12,3 | 224,0                   | 2,0             | 10/11  | 18,0                        | 18,5                         |
| 425 x 290 x 235                  | 12,3 | 224,0                   | 3,0             | 10/11  | 18,0                        | 18,5                         |
| 335 x 335 x 235                  | 11,2 | 224,0                   | 3,0             | 12/13  | 18,0                        | 18,5                         |
| 380 x 335 x 235                  | 12,7 | 224,0                   | 3,0             | 12/13  | 21,0                        | 21,5                         |
| 380 x 380 x 235                  | 14,4 | 224,0                   | 3,0             | 14/15  | 21,0                        | 21,5                         |
| 425 x 335 x 235                  | 14,2 | 224,0                   | 3,0             | 14/15  | 21,0                        | 21,5                         |
| 425 x 380 x 235                  | 16,1 | 224,0                   | 3,0             | 16/17  | 24,0                        | 24,5                         |
| 470 x 380 x 235                  | 17,9 | 224,0                   | 3,0             | 17/18  | 27,0                        | 27,5                         |

## DESIGN

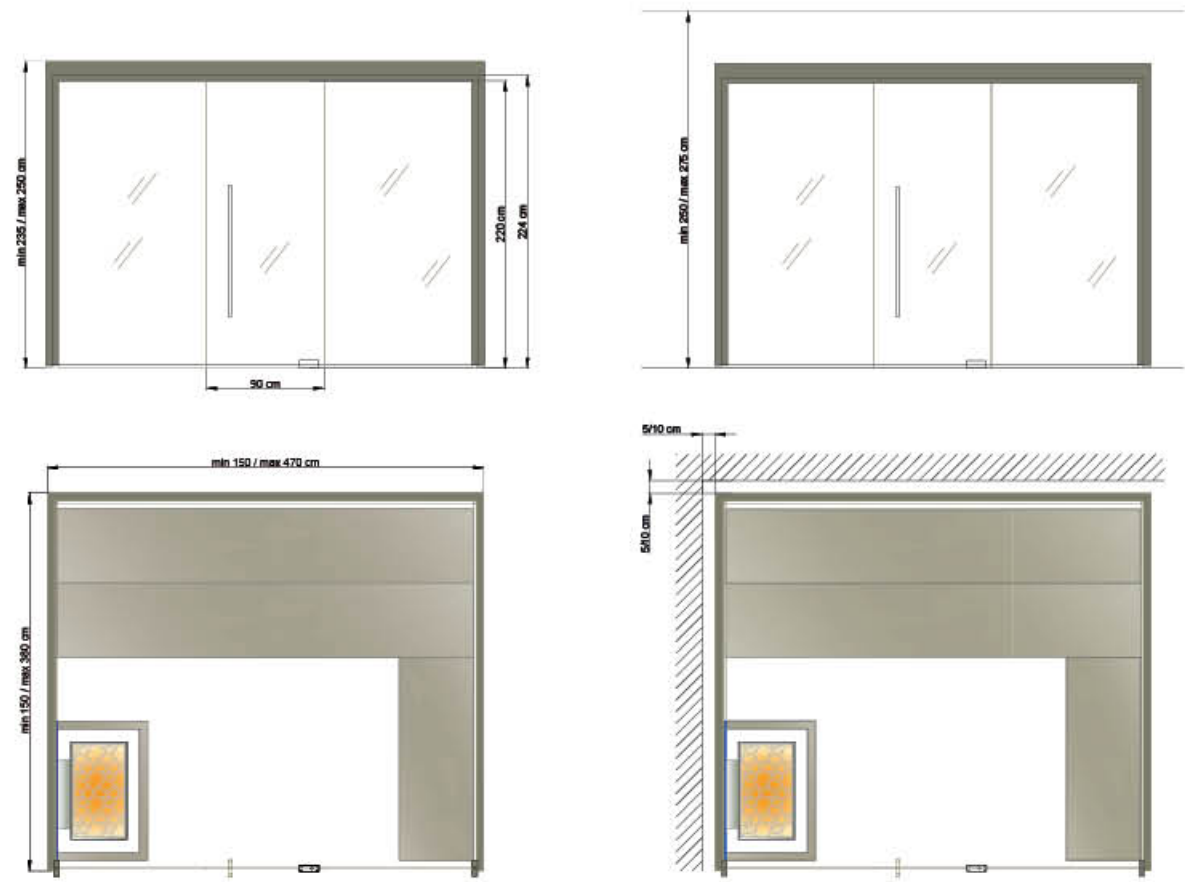
|   |   |
|---|---|
| DIMENSIONS (cm)                               | See table.  |
| NUMBER OF PEOPLE (max)                        | See table.  |
| COVERING OF THE INTERNAL WALLS                | Horizontal slats, from 80 mm width/20 mm thick.<br>Available natural solid woods: Hemlock.  |
| COVERING OF THE BACK OF THE HEATER            | *Back-painted glass, white or black or in ceramics brown.   |
| COVERING OF THE BENCHES AND OF THE STOVE MASK | Slats in Ayous, a-thermal and chip-free wood.   |
| DOOR  | In tempered glass, 10 mm thick.<br>Sizes 90 x 220 cm.<br>Hydraulic pivoting hinges including closing speed adjustment and the clock of the leaf.<br>The door can remain open if the opening angle is more than 80°. |
| HANDLE  | Model Onsen: in steel/wood - 100 cm long, square section.   |
| LIGHTING                                      | LED strip under the bench; LED behind the heater.   |
| FRONT WALL                                    | *Standard model: with no front glass wall.<br>*Panoramic model: with front glass wall in tempered glass. 10 mm thick, crushed-treated.  |
| EXTERNAL FRAME                                | *40 mm width, in the same solid wood of the internal walls.   |
| ACCESSORIES                                   | Thermometer, hygrometer, hourglass, ladle, bucket.<br>Head-rest in Ayous.   |
| MUSIC   | Audio speakers to be connected to the principal customer source.  |

EXTERNAL FINISH Raw in multilayer wood.

\*Item to be defined



## DIMENSIONS



## TECHNICAL DATA SHEET

|                           |  |            |
|---------------------------|--|------------|
| STRUCTURE                 | Modular self-standing structure made of prefab insulated panels 77 mm thick, provided with male and female connection frames to insure stability.<br>Texture of upright and crossbars in fir.<br>Thermal insulation with high density rock wool.<br>Steam barrier in aluminium.<br>External covering in multiplayer wood.<br>Base structure in adjustable steel (max 10 mm). |            |
| TECHNOLOGY                | Finnish sauna  | Soft sauna |
| TEMPERATURE               | 90°-100° C   | 50°-60° C  |
| HUMIDITY                  | 10-20%   | 40-60%     |
| HEATING                   | Electric high performance heater for commercial use, entirely in steel.<br>Best ratio between stone volume and air convection system for rapid heating times and powerful water infusions.<br>Electronic control unit and temperature probe.   |            |
| HEATER CONSUMPTIONS (Kw)  | See table.   |            |
| MAXIMUM CONSUMPTIONS (Kw) | See table.   |            |
| VOLTAGE                   | 400 V three-phase.   |            |
| SAFETY                    | Internal emergency button to be connected to an external alarm (not supplied).<br>Pressure safety system over the heater, stopping the unit in case of accidental contact with objects (towels, etc.).   |            |
| AIR RECYCLING             | Suction chimneys on the heater back and extraction chimneys under the bench.   |            |





# FINNISH SAUNA ONSEN

The Finnish sauna is a way to discover the ancient rituals. Onsen, from the Japanese word referring to a spa is the relaxing and familiar sauna.



\*The product images are not binding

## AVAILABLE SIZES

| EXTERNAL SIZES<br>L x P x H (cm) | m²   | INTERNAL<br>HEIGHT (cm) | BENCH<br>LEVELS | PEOPLE | HEATER<br>CONSUMPTIONS (kW) | MAXIMUM<br>CONSUMPTIONS (kW) |
|----------------------------------|------|-------------------------|-----------------|--------|-----------------------------|------------------------------|
| 150 x 150 x 235                  | 2,3  | 224,0                   | 1,0             | 1/2    | 4,0                         | 4,5                          |
| 150 x 150 x 235                  | 2,3  | 224,0                   | 2,0             | 1/2    | 4,0                         | 4,5                          |
| 200 x 150 x 235                  | 3,0  | 224,0                   | 1,0             | 2/3    | 4,0                         | 4,5                          |
| 200 x 150 x 235                  | 3,0  | 224,0                   | 2,0             | 2/3    | 4,0                         | 4,5                          |
| 200 x 200 x 235                  | 4,0  | 224,0                   | 2,0             | 4/5    | 6,0                         | 6,5                          |
| 245 x 200 x 235                  | 4,9  | 224,0                   | 2,0             | 5/6    | 7,5                         | 8,0                          |
| 245 x 245 x 235                  | 5,9  | 224,0                   | 2,0             | 6/7    | 9,0                         | 9,5                          |
| 290 x 245 x 235                  | 7,1  | 224,0                   | 2,0             | 7/8    | 9,0                         | 9,5                          |
| 290 x 290 x 235                  | 8,4  | 224,0                   | 2,0             | 8/9    | 12,0                        | 12,5                         |
| 290 x 290 x 235                  | 8,4  | 224,0                   | 3,0             | 8/9    | 12,0                        | 12,5                         |
| 335 x 290 x 235                  | 9,7  | 224,0                   | 2,0             | 9/10   | 15,0                        | 15,5                         |
| 335 x 290 x 235                  | 9,7  | 224,0                   | 3,0             | 9/10   | 15,0                        | 15,5                         |
| 425 x 290 x 235                  | 12,3 | 224,0                   | 2,0             | 10/11  | 18,0                        | 18,5                         |
| 425 x 290 x 235                  | 12,3 | 224,0                   | 3,0             | 10/11  | 18,0                        | 18,5                         |
| 335 x 335 x 235                  | 11,2 | 224,0                   | 3,0             | 12/13  | 18,0                        | 18,5                         |
| 380 x 335 x 235                  | 12,7 | 224,0                   | 3,0             | 12/13  | 21,0                        | 21,5                         |
| 380 x 380 x 235                  | 14,4 | 224,0                   | 3,0             | 14/15  | 21,0                        | 21,5                         |
| 425 x 335 x 235                  | 14,2 | 224,0                   | 3,0             | 14/15  | 21,0                        | 21,5                         |
| 425 x 380 x 235                  | 16,1 | 224,0                   | 3,0             | 16/17  | 24,0                        | 24,5                         |
| 470 x 380 x 235                  | 17,9 | 224,0                   | 3,0             | 17/18  | 27,0                        | 27,5                         |

## DESIGN

|  |   |
|--|---|
| DIMENSIONS (cm)                                  | See table.  |
| NUMBER OF PEOPLE (max)                           | See table.  |
| COVERING OF THE<br>INTERNAL WALLS                | Horizontal slats, from 35 mm width/20 mm thick.<br>* Available natural solid woods: Hemlock or Red Cedar.   |
| COVERING OF THE BACK<br>OF THE HEATER            | *Back-painted glass, white or black or in ceramics brown.   |
| COVERING OF THE BENCHES<br>AND OF THE STOVE MASK | *Slats in Hemlock.<br>*Slats in Red Cedar, in case of walls in Red Cedar.   |
| DOOR   | In tempered glass, 10 mm thick.<br>Sizes 90 x 220 cm.<br>Hydraulic pivoting hinges including closing speed adjustment and the end clock of the leaf.<br>The door can remain open if the opening angle is more than 80°. |
| HANDLE   | Model Onsen: in steel/wood - 100 cm long, square section.   |
| LIGHTING   | LED strip in the back of the bench - LED behind the heater - LED in the water container.  |
| FRONTAL WALL                                     | *Standard model: with no front glass wall.<br>*Panoramic model: with front glass wall in tempered glass. 10 mm thick, crushed-treated.  |
| EXTERNAL FRAME                                   | 40 mm width, in the same solid wood of the internal walls.  |
| ACCESSORIES                                      | Thermometer, hygrometer, hourglass, ladle, bucket.<br>*Head-rest in Hemlock or Red Cedar.   |
| BUCKET   | Water bucket integrated into the wood mask of the heater with n. 01 red LED immersed.   |
| MUSIC  | Audio speakers to be connected to the principal customer source.  |
| EXTERNAL FINISH                                  | Raw in multilayer wood.   |

\* Item to be defined



# DIMENSIONS



# TECHNICAL DATA SHEET

|                           |   |            |
|---------------------------|---|------------|
| STRUCTURE                 | Modular self-standing structure made of prefab insulated panels 77 mm thick, provided with male and female connection frames to insure stability.<br>Texture of upright and crossbars in fir.<br>Thermal insulation with high density rock wool.<br>Steam barrier in aluminium.<br>External covering in multilayer wood.<br>Base structure in adjustable steel (max 10 mm). |            |
| TECHNOLOGY                | Finnish sauna   | Soft sauna |
| TEMPERATURE               | 90°-100° C  | 50°-60° C  |
| HUMIDITY                  | 10-20%  | 40-60%     |
| HEATING                   | Electric high performance heater for commercial use, entirely in steel.<br>Best ratio between stone volume and air convection system for rapid heating times and powerful water infusions.<br>Electronic control unit and temperature probe.  |            |
| HEATER CONSUMPTIONS (kW)  | See table.  |            |
| MAXIMUM CONSUMPTIONS (kW) | See table.  |            |
| VOLTAGE                   | 400 V three-phase.  |            |
| SAFETY                    | Internal emergency button to be connected to an external alarm device (not supplied).<br>Pressure safety system over the heater, stopping the unit in case of accidental contact with objects (towels, etc.).   |            |
| AIR RECYCLING             | Suction chimneys on the heater back and extraction chimneys under the bench.  |            |





# FINNISH SAUNA

## EMOTION

Internal covering on the Finnish Emotion sauna is a natural oak, combined with the dry heat from 90° to 100°C makes the entire ambience pleasant and welcoming.



\*The product images are not binding

## AVAILABLE SIZES

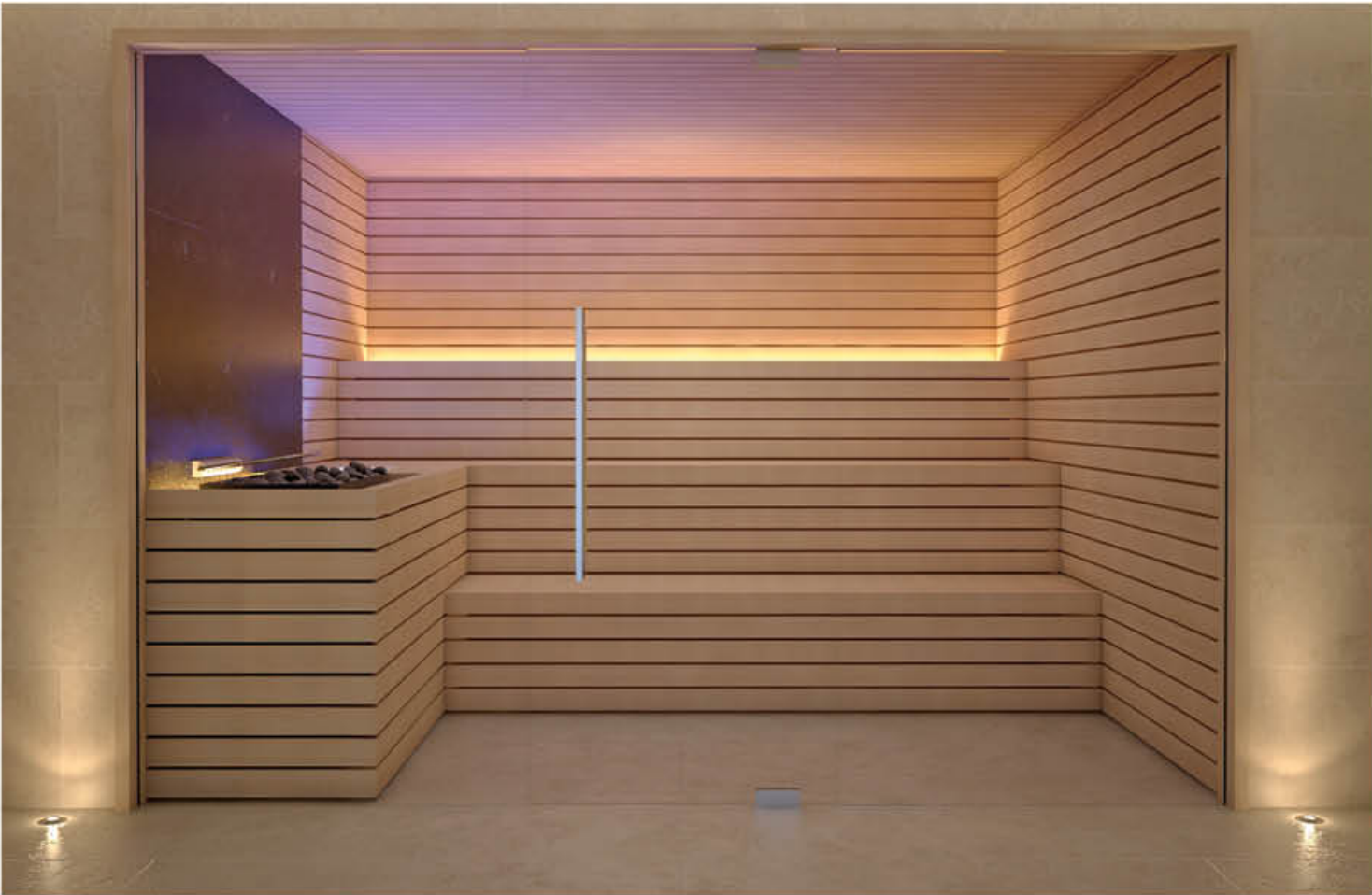
| EXTERNAL SIZES<br>L x P x H (cm) | m²   | INTERNAL<br>HEIGHT (cm) | BENCH<br>LEVELS | PEOPLE | HEATER<br>CONSUMPTIONS (kW) | MAXIMUM<br>CONSUMPTIONS (kW) |
|----------------------------------|------|-------------------------|-----------------|--------|-----------------------------|------------------------------|
| 150 x 150 x 235                  | 2,3  | 224,0                   | 1,0             | 1/2    | 4,0                         | 4,5                          |
| 150 x 150 x 235                  | 2,3  | 224,0                   | 2,0             | 1/2    | 4,0                         | 4,5                          |
| 200 x 150 x 235                  | 3,0  | 224,0                   | 1,0             | 2/3    | 4,0                         | 4,5                          |
| 200 x 150 x 235                  | 3,0  | 224,0                   | 2,0             | 2/3    | 4,0                         | 4,5                          |
| 200 x 200 x 235                  | 4,0  | 224,0                   | 2,0             | 4/5    | 6,0                         | 6,5                          |
| 245 x 200 x 235                  | 4,9  | 224,0                   | 2,0             | 5/6    | 7,5                         | 8,0                          |
| 245 x 245 x 235                  | 5,9  | 224,0                   | 2,0             | 6/7    | 9,0                         | 9,5                          |
| 290 x 245 x 235                  | 7,1  | 224,0                   | 2,0             | 7/8    | 9,0                         | 9,5                          |
| 290 x 290 x 235                  | 8,4  | 224,0                   | 2,0             | 8/9    | 12,0                        | 12,5                         |
| 290 x 290 x 235                  | 8,4  | 224,0                   | 3,0             | 8/9    | 12,0                        | 12,5                         |
| 335 x 290 x 235                  | 9,7  | 224,0                   | 2,0             | 9/10   | 15,0                        | 15,5                         |
| 335 x 290 x 235                  | 9,7  | 224,0                   | 3,0             | 9/10   | 15,0                        | 15,5                         |
| 425 x 290 x 235                  | 12,3 | 224,0                   | 2,0             | 10/11  | 18,0                        | 18,5                         |
| 425 x 290 x 235                  | 12,3 | 224,0                   | 3,0             | 10/11  | 18,0                        | 18,5                         |
| 335 x 335 x 235                  | 11,2 | 224,0                   | 3,0             | 12/13  | 18,0                        | 18,5                         |
| 380 x 335 x 235                  | 12,7 | 224,0                   | 3,0             | 12/13  | 21,0                        | 21,5                         |
| 380 x 380 x 235                  | 14,4 | 224,0                   | 3,0             | 14/15  | 21,0                        | 21,5                         |
| 425 x 335 x 235                  | 14,2 | 224,0                   | 3,0             | 14/15  | 21,0                        | 21,5                         |
| 425 x 380 x 235                  | 16,1 | 224,0                   | 3,0             | 16/17  | 24,0                        | 24,5                         |
| 470 x 380 x 235                  | 17,9 | 224,0                   | 3,0             | 17/18  | 27,0                        | 27,5                         |

## DESIGN

|  |   |
|--|---|
| DIMENSIONI (cm)                                  | See table.  |
| NUMBER OF PEOPLE (max)                           | See table.  |
| COVERING OF THE<br>INTERNAL WALLS                | Horizontal slats, from 80 mm width/20 mm thick.<br>Available natural solid woods: Hemlock or brushed Oak.   |
| COVERING OF THE BACK<br>OF THE HEATER            | *Back-painted glass, white or black or in ceramics brown.   |
| COVERING OF THE BENCHES AND<br>OF THE STOVE MASK | *Slats in Ayous, a-thermal and chip-free wood in case of walls in Hemlock.<br>*Slats in thermally-treated wood in case of walls in natural Oak.   |
| DOOR   | In tempered glass, 10 mm thick.<br>Sizes 90 x 220 cm.<br>Hydraulic pivoting hinges including closing speed adjustment and the end clock of the leaf.<br>The door can remain open if the opening angle is more than 80°. |
| HANDLE   | Model Onsen: in steel/wood - 100 cm long, square section.   |
| LIGHTING   | LED strip behind the bench - LED behind the heater - LED in the water container.  |
| FRONT WALL                                       | *Standard model: with no front glass wall.<br>*Panoramic model: with front glass wall in tempered glass. 10 mm thick, crushed-treated.  |
| EXTERNAL FRAME                                   | 40 mm width, in the same solid wood of the internal walls.  |
| ACCESSORIES                                      | Thermometer, hygrometer, hourglass, ladle, bucket.<br>*Head-rest in Ayous or Oak.   |
| BUCKET   | Water bucket integrated into the wood mask of the heater with n.01 red LED immersed.  |
| MUSIC  | Audio speakers to be connected to the principal customer source.  |
| EXTERNAL FINISH                                  | Raw in multilayer wood.   |
| *Item to be defined                              |   |



# DIMENSIONS



# TECHNICAL DATA SHEET

|                           |   |            |
|---------------------------|---|------------|
| STRUCTURE                 | Modular self-standing structure made of prefab insulated panels 77 mm thick, provided with male and female connection frames to insure stability.<br>Texture of upright and crossbars in fir.<br>Thermal insulation with high density rock wool.<br>Steam barrier in aluminium.<br>External covering in multilayer wood.<br>Base structure in adjustable steel (max 10 mm). |            |
| TECHNOLOGY                | Finnish sauna   | Soft sauna |
| TEMPERATURE               | 90°-100° C  | 50°-60° C  |
| HUMIDITY                  | 10-20%  | 40-60%     |
| HEATING                   | Electric high performance heater for commercial use, entirely in steel.<br>Best ratio between stone volume and air convection system for rapid heating times and powerful water infusions.<br>Electronic control unit and temperature probe.  |            |
| HEATER CONSUMPTIONS (kW)  | See table.  |            |
| MAXIMUM CONSUMPTIONS (kW) | See table.  |            |
| VOLTAGE                   | 400 V three-phase.  |            |
| SAFETY                    | Internal emergency button to be connected to an external alarm device (not supplied).<br>Pressure safety system over the heater, stopping the unit in case of accidental contact with objects (towels, etc.).   |            |
| AIR RECYCLING             | Suction chimneys on the heater back and extraction chimneys under the bench.  |            |





# EMOTIONAL SHOWER

---

Contrasting colors, fragrances, temperatures, and water intensity create a pleasant experience for both body and mind.

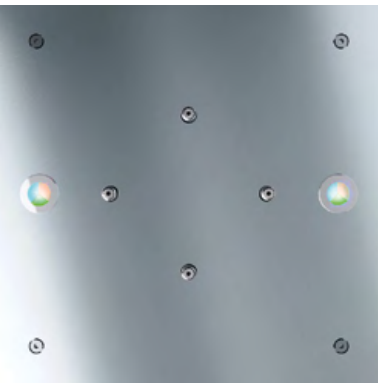


\*The product images are not binding



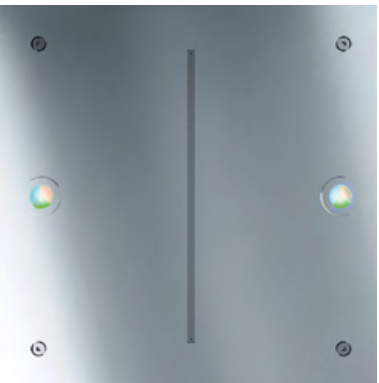
# EMOTIONAL SHOWER BREEZE

|                             |  |
|-----------------------------|--|
| MODEL                       | 30 BREEZE  |
| CEILING PLATE SIZE (cm)     | 30 x 30  |
| TECHNOLOGY                  | Ceiling mounted plate in stainless steel, 30 x 30 cm.<br>Breeze nozzless integrated into the plate.<br>2 RGB LED used also as courtesy lights integrated into the plate.<br>1 wall silk-screened wall plate in stainless steel.<br>1 lighted piezoelectric button.<br>Distribution hydraulic collector.<br>Electronic valves.<br>Electronic control unit.<br>1 dosing pump for aromatic essence.<br>15 l drum of aromatic essence. |
| WATER TEMPERATURE           | Cold.  |
| AROMATIC ESSENCE            | 15 l drum of eucalyptus.   |
| LED COLOUR WHEN ON          | Blue.  |
| LED COLOUR WHEN IN STAND-BY | White.   |
| CYCLE TIMING                | 30 seconds.  |
| ABSORPTION                  | 0,15 kW  |



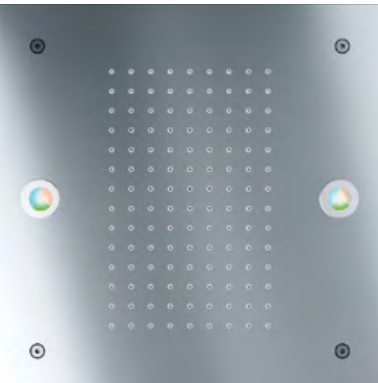
# EMOTIONAL SHOWER WATER BLADE

|                             |   |
|-----------------------------|---|
| MODEL                       | 30 WATER BLADE  |
| CEILING PLATE SIZE (cm)     | 30 x 30   |
| TECHNOLOGY                  | Ceiling mounted plate in stainless steel, 30 x 30 cm.<br>Water blade integrated into the plate.<br>2 RGB LED used also as courtesy lights integrated into the plate.<br>1 wall silk-screened wall plate in stainless steel.<br>1 lighted piezoelectric button.<br>Distribution hydraulic collector.<br>Electronic valves.<br>Electronic control unit.<br>1 dosing pump for earomatic essence.<br>15 l drum of aromatic essence. |
| WATER TEMPERATURE           | Cold - hot.   |
| AROMATIC ESSENCE            | 15 l drum of eucalyptus.  |
| LED COLOUR WHEN ON          | Green.  |
| LED COLOUR WHEN IN STAND-BY | White.  |
| CYCLE TIMING                | 30 seconds.   |
| ABSORPTION                  | 0,15 kW   |



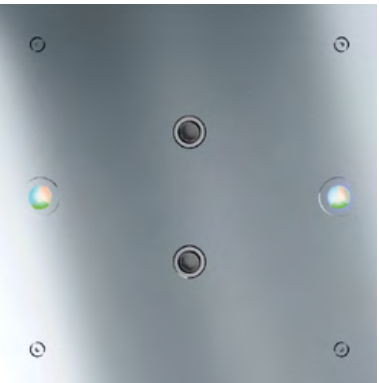
# EMOTIONAL SHOWER TROPICAL

|                             |   |
|-----------------------------|---|
| MODEL                       | 30 TROPICAL   |
| CEILING PLATE SIZE (cm)     | 30 x 30   |
| TECHNOLOGY                  | Ceiling mounted plate in stainless steel, 30 x 30 cm.<br>Tropical nozzles integrated into the plate.<br>2 RGB LED used also as courtesy lights integrated into the plate.<br>1 wall silk-screened wall plate in stainless steel.<br>1 lighted piezoelectric button.<br>Distribution hydraulic collector.<br>Electronic valves.<br>Electronic control unit.<br>1 dosing pumps for aromatic essence.<br>15 l drums of aromatic essence. |
| WATER TEMPERATURE           | Hot.  |
| AROMATIC ESSENCE            | 15 l drum of tropical.  |
| LED COLOUR WHEN ON          | Red.  |
| LED COLOUR WHEN IN STAND-BY | White.  |
| CYCLE TIMING                | 30 second.  |
| ABSORPTION                  | 0,15 kW   |



# EMOTIONAL SHOWER WATER COLUMNS

|                             |   |
|-----------------------------|---|
| MODEL                       | 30 WATER COLUMNS  |
| CEILING PLATE SIZE (cm)     | 30 x 30   |
| TECHNOLOGY                  | Ceiling mounted plate in stainless steel, 30 x 30 cm.<br>Water columns nozzless integrated into the plate.<br>2 RGB LED used also as courtesy lights integrated into the plate.<br>1 wall silk-screened wall plate in stainless steel.<br>1 lighted piezoelectric button.<br>Distribution hydraulic collector.<br>Electronic valves.<br>Electronic control unit.<br>1 dosing pump for aromatic essence.<br>15 l drum of aromatic essence. |
| WATER TEMPERATURE           | Cold - hot.   |
| AROMATIC ESSENCE            | 15 l drum of eucalyptus.  |
| LED COLOUR WHEN ON          | Blue - red.   |
| LED COLOUR WHEN IN STAND-BY | White.  |
| CYCLE TIMING                | 30 seconds.   |
| ABSORPTION                  | 0,15 kW   |





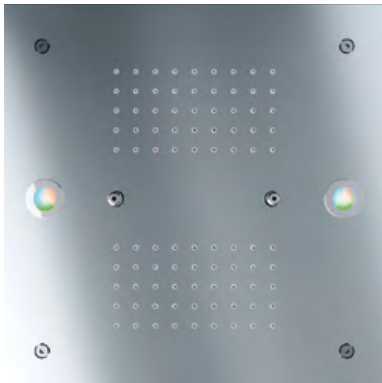
WATER BUCKET

|                          |  |
|--------------------------|--|
| MODEL                    | Maple.   |
| CEILING PLATE SIZES (cm) | -  |
| TECHNOLOGY               | Bucket in Canadian waterproof bucket.<br>Trapezoid balancing structure in aluminium.<br>Automated filling system.<br>Rope tie rod. |
| WATER TEMPERATURE        | Cold.  |



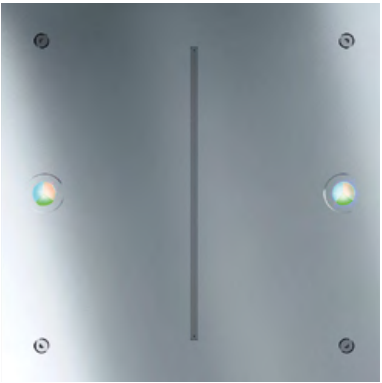
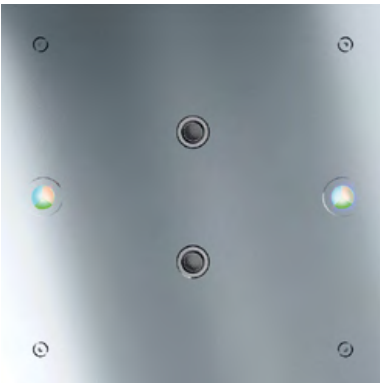
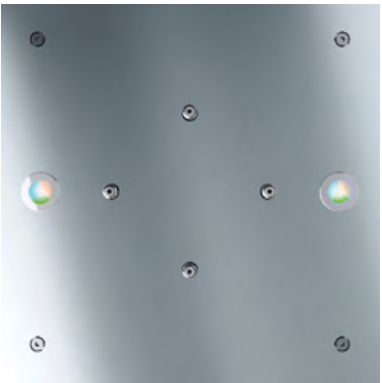
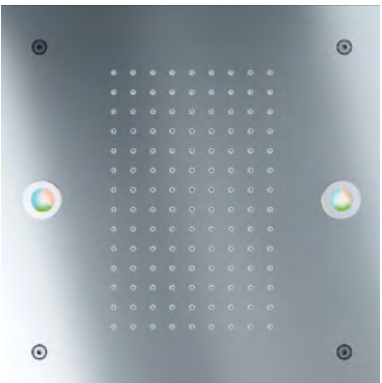
EMOTIONAL SHOWER TROPICAL AND BREEZE

|                             |  |
|-----------------------------|--|
| MODEL                       | TROPICAL AND BREEZE  |
| CEILING PLATE SIZE (cm)     | 30 x 30  |
| TECHNOLOGY                  | Ceiling mounted plate in stainless steel, 30 x 30 cm.<br>Tropical and breeze nozzless integrated into the plate.<br>2 RGB LED used also as courtesy lights integrated into the plate.<br>1 wall silk-screened wall plate in stainless steel.<br>2 lighted piezoelectric button.<br>Distribution hydraulic collector.<br>Electronic valves.<br>Electronic control unit.<br>2 dosing pumps for aromatic essence.<br>2 5 l drums of aromatic essence. |
| WATER TEMPERATURE           | Cold - hot.  |
| AROMATIC ESSENCE            | 1 5 l drum of tropical and mint oil.   |
| LED COLOUR WHEN ON          | Red - blue.  |
| LED COLOUR WHEN IN STAND-BY | White.   |
| CYCLE TIMING                | 30 seconds.  |
| ABSORPTION                  | 0,15 kW  |



WATER PARADISE

|                                 |   |
|---------------------------------|---|
| MODEL                           | 30 WATER PARADISE   |
| CEILING PLATE SIZE (cm)         | 30 x 30   |
| SHOWER TROPICAL TECHNOLOGY      | 1 ceiling mounted plate in stainless steel, 30 x 30 cm.<br>Tropical nozzless integrated into the plate.<br>2 RGB LED used also as courtesy lights integrated into the plate.                      |
| WATER TEMPERATURE               | Hot.  |
| AROMATIC ESSENCE                | 1 5 l drum of eucalyptus.   |
| CYCLE TIMING                    | 30 seconds.   |
| LED COLOUR WHEN ON              | Red.  |
| LED COLOUR WHEN IN STAND-BY     | White.  |
| SHOWER BREEZ TECHNOLOGY         | 1 ceiling mounted plate in stainless steel, 30 x 30 cm.<br>Brezza nozzless integrated into the plate.<br>2 RGB LED used also as courtesy lights fintegrated into the plate.                       |
| WATER TEMPERATURE               | Cold.   |
| AROMATIC ESSENCE                | 1 5 l drum of eucalyptus.   |
| CYCLE TIMING                    | 30 seconds.   |
| LED COLOUR WHEN ON              | Blue.   |
| LED COLOUR WHEN IN STAND-BY     | White.  |
| SHOWER WATER COLUMNS TECHNOLOGY | 1 ceiling mounted plate in stainless steel, 30 x 30 cm.<br>Water colums nozzless integrated into the plate.<br>2 RGB LED used also as courtesy lights integrated into the plate.                  |
| WATER TEMPERATURE               | Cold.   |
| AROMATIC ESSENCE                | 1 5 l drum of mango.  |
| CYCLE TIMING                    | 30 seconds.   |
| LED COLOUR WHEN ON              | Green.  |
| LED COLOUR WHEN IN STAND-BY     | White.  |
| SHOWER WATER BLADE TECHNOLOGY   | 1 ceiling mounted plate in stainless steel, 30 x 30 cm.<br>Water blade nozzless integrated into the plate.<br>2 RGB LED used adlso as courtesy lights integrated into the plate.                  |
| WATER TEMPERATURE               | Hot.  |
| AROMATIC ESSENCE                | 1 5 l drum of peppermint.   |
| CYCLE TIMING                    | 30 seconds.   |
| LED COLOUR WHEN ON              | Red.  |
| LED COLOUR WHEN IN STAND-BY     | White.  |
| TECHNOLOGY                      | Distribution hydraulic collector.<br>Electronic valve.<br>Electronic control unit.<br>1 lighted piezoelectric button.<br>4 dosing pumps for aromatic essence.<br>4 5 l drums of aromatic essence. |
| ABSORPTION                      | 0,30 kW   |





# ICE FOUNTAIN

Dry ice produced by the ice fountain allows both your body temperature and blood circulation to return to normal after enjoying a Finnish sauna.



\*The product images are not binding

## ICE FOUNTAIN WITH A GLASS/GLASS CEILING

|                     |  |
|---------------------|--|
| <b>ICE FOUNTAIN</b> |  |
| MODEL               | Fitted to the ceiling - glass/glass.   |
| TECHNOLOGY          | Production of ice flakes 160 kg/24 h.<br>Support for the ceiling fitting.<br>Control unit fitted with timer. |
| ABSORPTION          | 0,65 kW  |
| VOLTAGE             | 220-240 V  |
| <b>SLIDE</b>        |  |
| MODEL               | Rectangular-steel.   |
| SIZES (cm)          | 15 x 15 x 50 H   |
| STRUCTURE           | Steel.   |
| COVERING            | Steel.   |
| <b>ICE BUCKET</b>   |  |
| MODEL               | Glass/glass.   |
| SIZE (cm)           | 51 x 51 x 90 H   |
| STRUCTURE           | Square support in EPS (sizes 51 x 51 x 68 H cm).<br>Glass container (sizes 51 x 51 x 22 H cm).<br>Drain.     |
| COVERING            | Black glass.   |
| LIGHTING            | 1 blue LED.  |



Covering in black glass.

|                     |  |
|---------------------|--|
| <b>ICE FOUNTAIN</b> |  |
| MODEL               | Fitted to the ceiling-glass/glass.   |
| TECHNOLOGY          | Production of ice flakes 160 kg/24 h.<br>Support for the ceiling fitting.<br>Control unit fitted with timer. |
| ABSORPTION          | 0,65 kW  |
| VOLTAGE             | 220-240 V  |
| <b>SLIDE</b>        |  |
| MODEL               | Rectangular-steel.   |
| SIZE (cm)           | 15 x 15 x 50 H   |
| STRUCTURE           | Steel.   |
| COVERING            | Steel.   |
| <b>ICE BUCKET</b>   |  |
| MODEL               | Glass/glass.   |
| SIZE (cm)           | 51 x 51 x 90 H   |
| STRUCTURE           | Square support in EPS (sizes 51 x 51 x 68 H cm).<br>Glass container (sizes 51 x 51 x 22 H cm).<br>Drain.     |
| COVERING            | White glass.   |
| LIGHTING            | 1 blue LED.  |



Covering in white glass.



# SALT WALL

The salt wall is a supplemental accessory to the relaxation area.  
Short stays in rooms with salt walls can mimic benefits of being in a marine environment long-term.



## SALT WALL

|                        |   |
|------------------------|---|
| MODEL                  | Heated.   |
| STRUCTURE              | Self-standing solid wood structure to be fitted to the wall.<br>Himalayas pink salt bricks fitted to the structure.<br>External frame in brushed oak. |
| SALT WALL SIZES (cm)   | 300 x 220 x 25 thick.   |
| HEATER COVER           | Stove mask in brushed oak.  |
| LIGHTING               | LED strip assembled in the back of the salt wall.<br>2 LED fitted into the stove mask.  |
| HEATING                | Electric high performance heater for commercial use, entirely in stainless steel.<br>Electronic control unit and temperature probe.                   |
| HEATER POWER           | 4,5 /7,5 kW   |
| MAXIMUM ABSORBED POWER | 5,5 /8,0 kW   |
| VOLTAGE                | 400 V three-phase   |





# RELAX BEDS

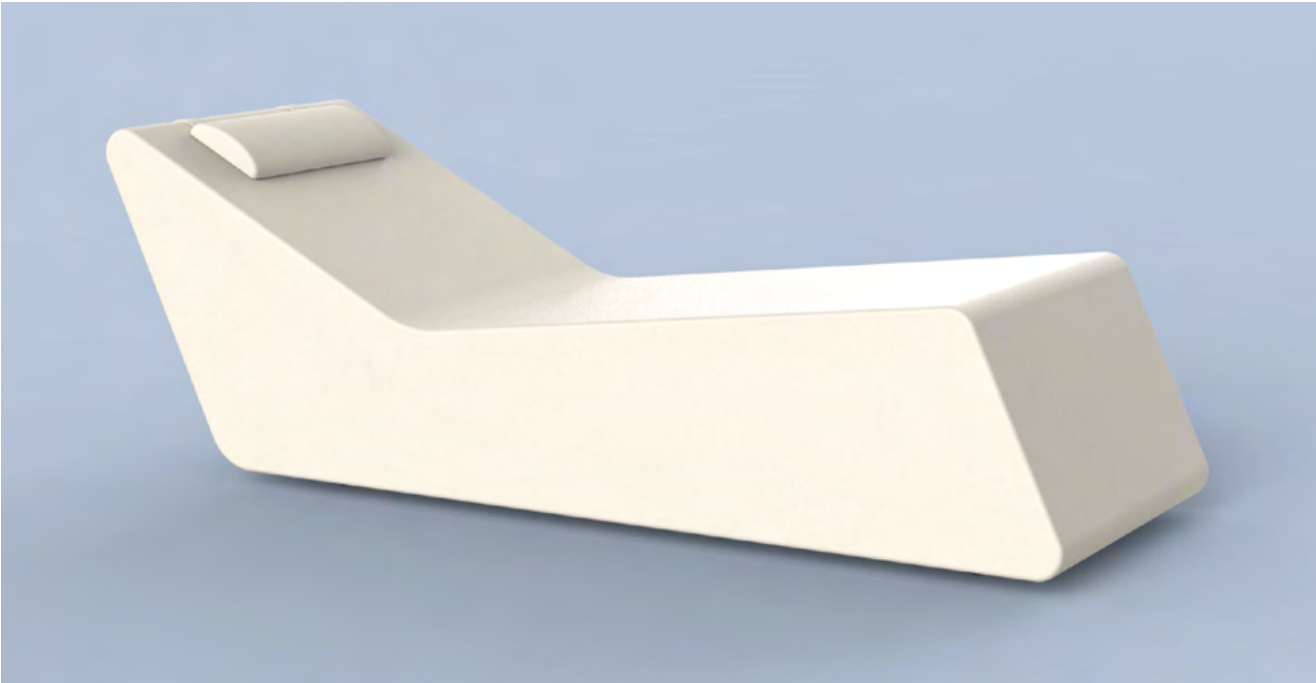
Ergonomics and comfortable beds covered in Dacron available in different shades. These ergonomic beds create the most tranquil areas to relax and let your stress melt away.



\*The product images are not binding








BED GRAN RELAX 5.1

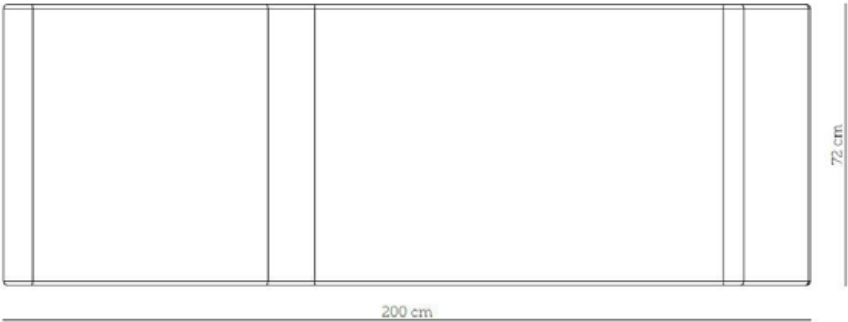
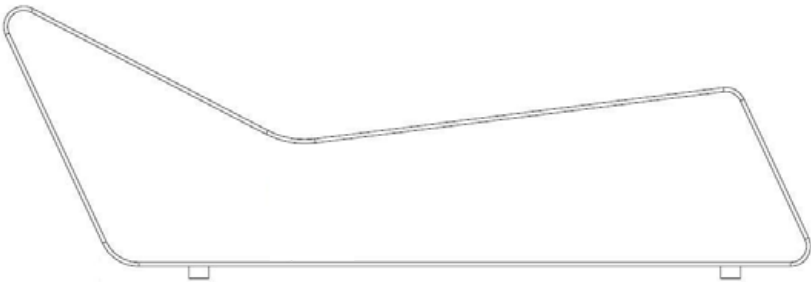
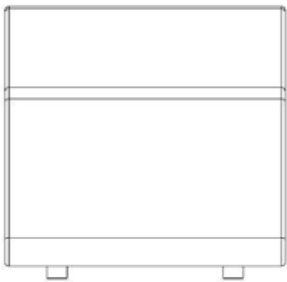


AVAILABLE COLOURS\*



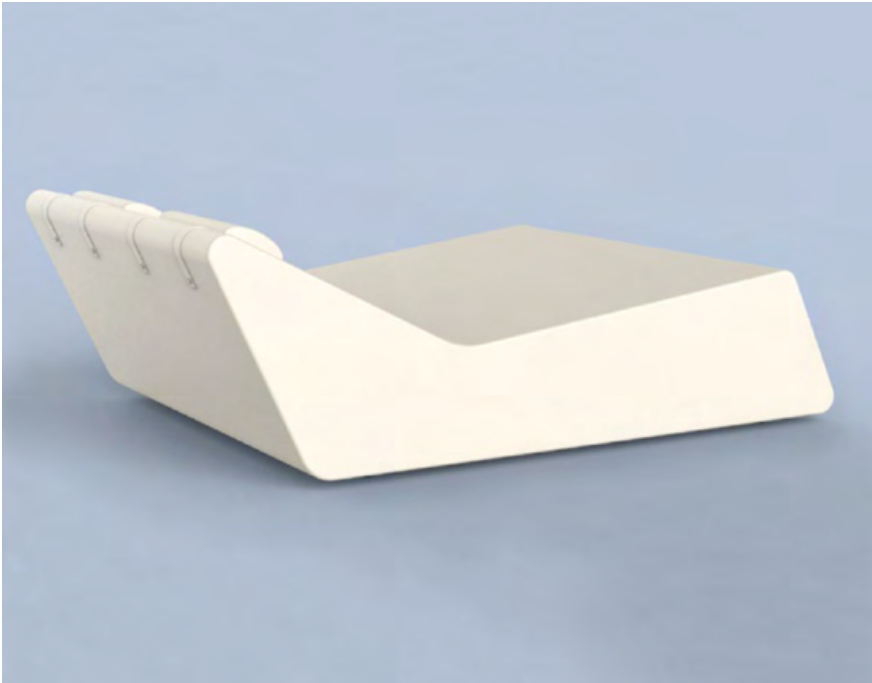
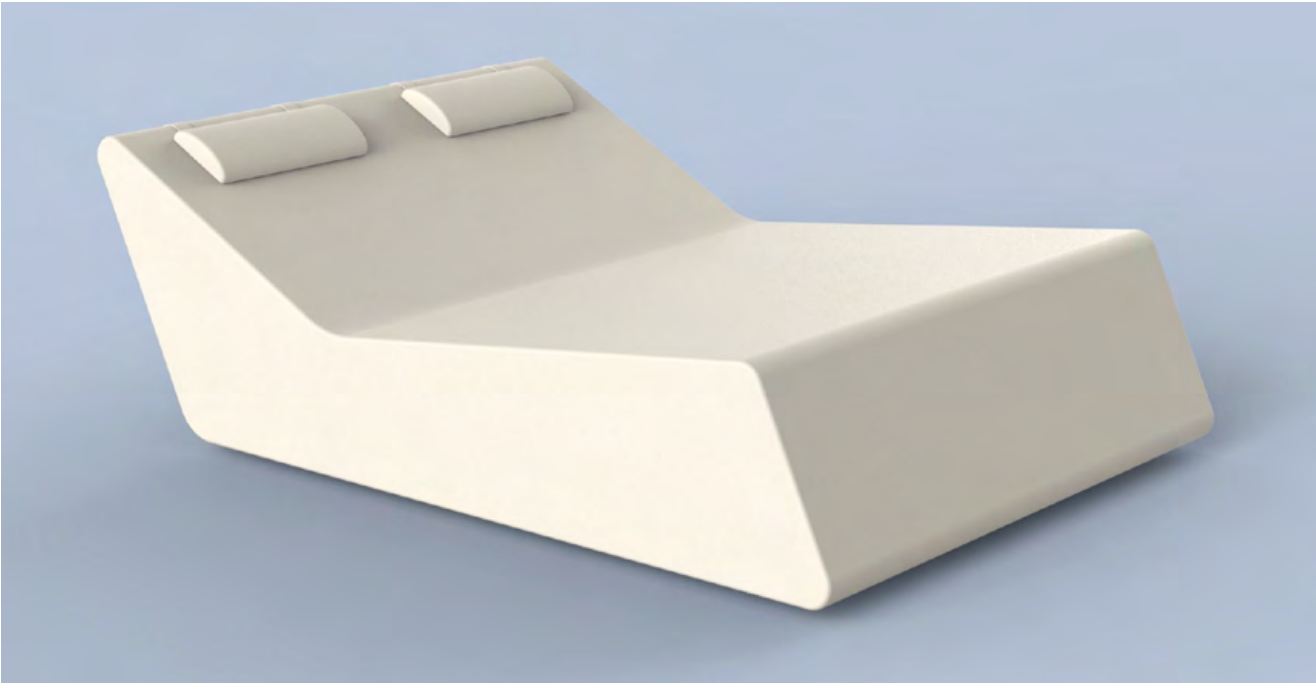
Abitex | Inca - 101  
\*to be defined

|                          |  |
|--------------------------|--|
| SIZES (cm)               | 200 x 72   |
| STRUCTURE                | Plywood and non-slip feet, 2 cm high.  |
| UPHOLSTERY               | Polyurethane highly resilient foam, covered in Dacron.   |
| WEIGHT                   | 30 kg  |
| USE                      | Internal.  |
| FABRIC                   | Inca 88% PVC - 6% PL - 6% CO      |
| CUSHION                  | Polyurethane highly resilient foam, covered in Dacron.   |
| CERTIFICATION CLASS 1 IM | Product certified in class 1 IM. Fireproof upholstery.   |







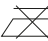


BED GRAN RELAX 5.2

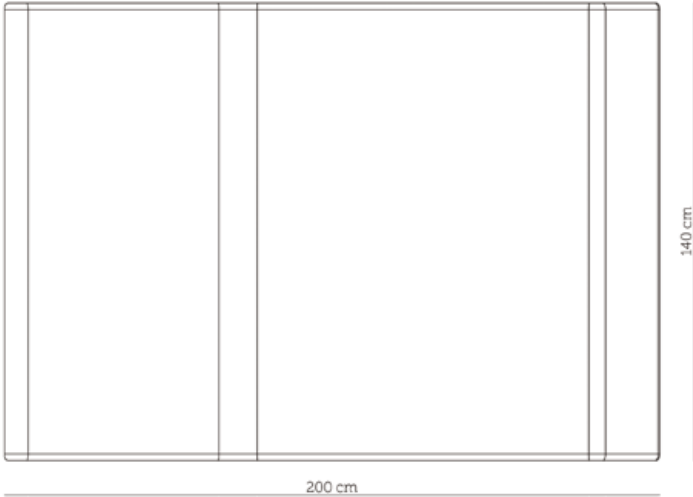
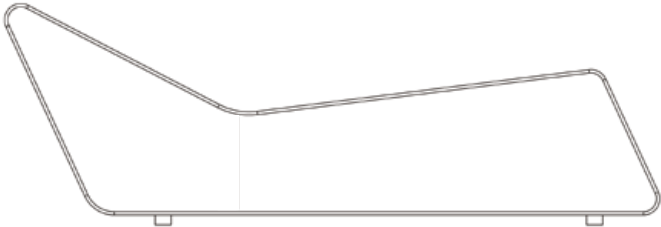
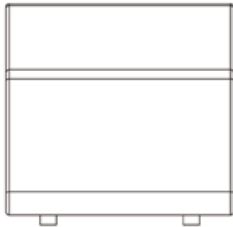


AVAILABLE COLOURS\*



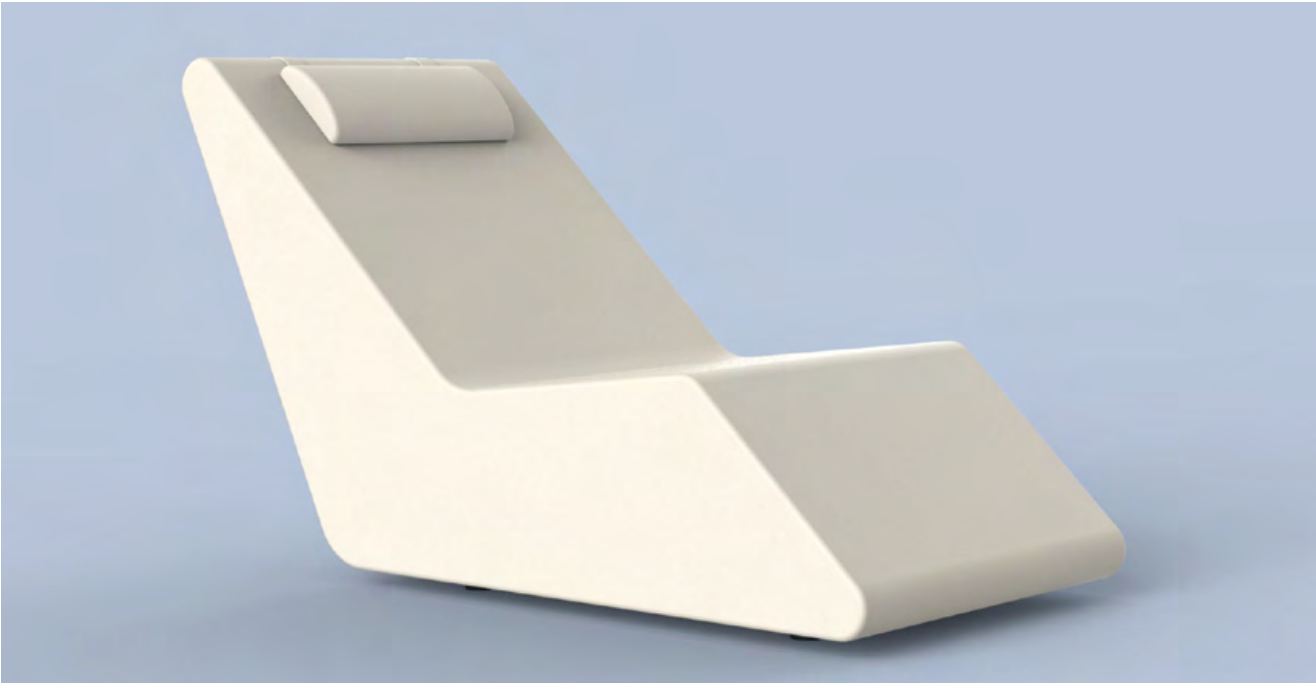
Abitex | Inca - 101      Abitex | Inca - 55      Abitex | Inca - 56      Abitex | Inca - 411      Abitex | Inca - 414      Abitex | Inca - 603  
\*to be defined

|                          |  |  |
|--------------------------|--|--|
| SIZES (cm)               | 200 x 140  |  |
| STRUCTURE                | Plywood and non-slip feet, 2 cm high.  |  |
| UPHOLSTERY               | Polyurethane highly resilient foam, covered in Dacron.   |  |
| WEIGHT                   | 60 kg  |  |
| USE                      | Internal.  |  |
| FABRIC                   | Inca 88% PVC - 6% PL - 6% CO      |  |
| CUSHION                  | Polyurethane highly resilient foam, covered in Dacron.   |  |
| CERTIFICATION CLASS 1 IM | Product certified in class 1 IM. Fireproof upholstery.   |  |










BED GRAN RELAX 5.3

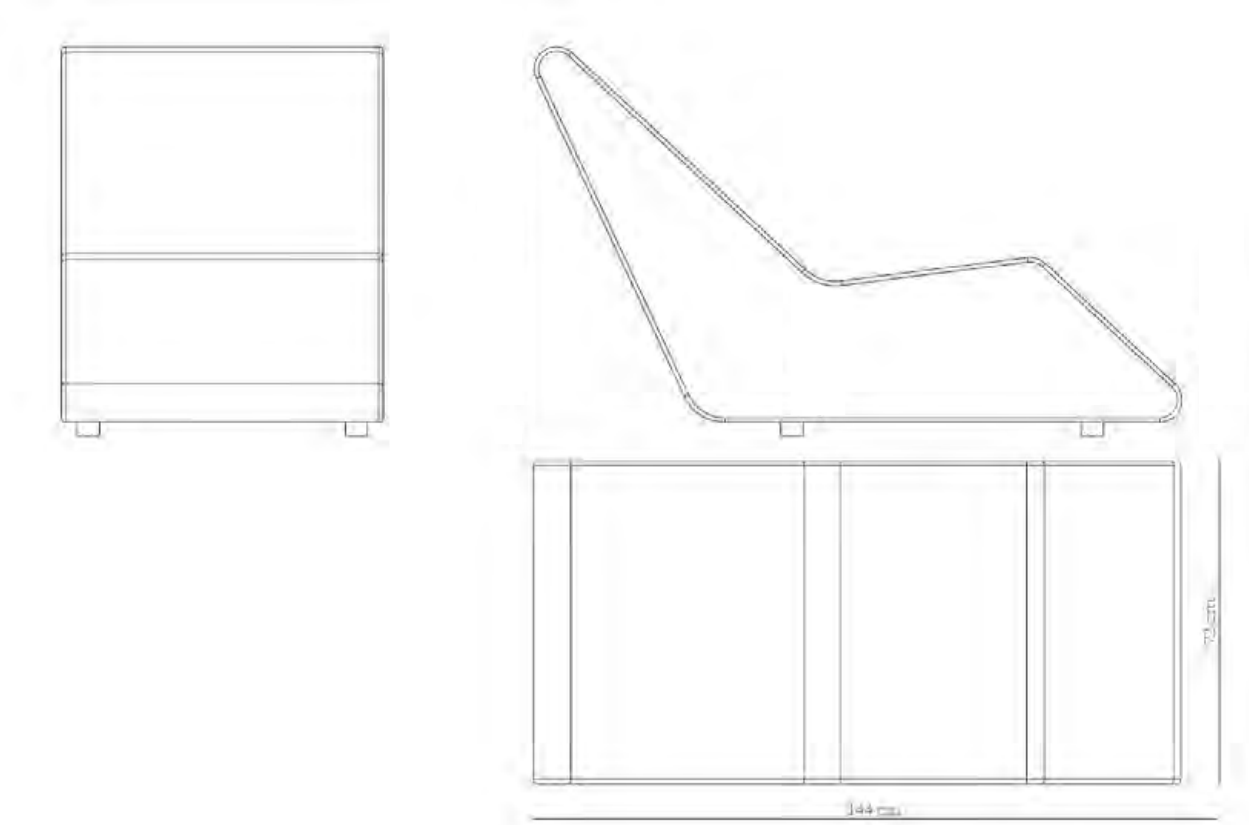


AVAILABLE COLOURS\*



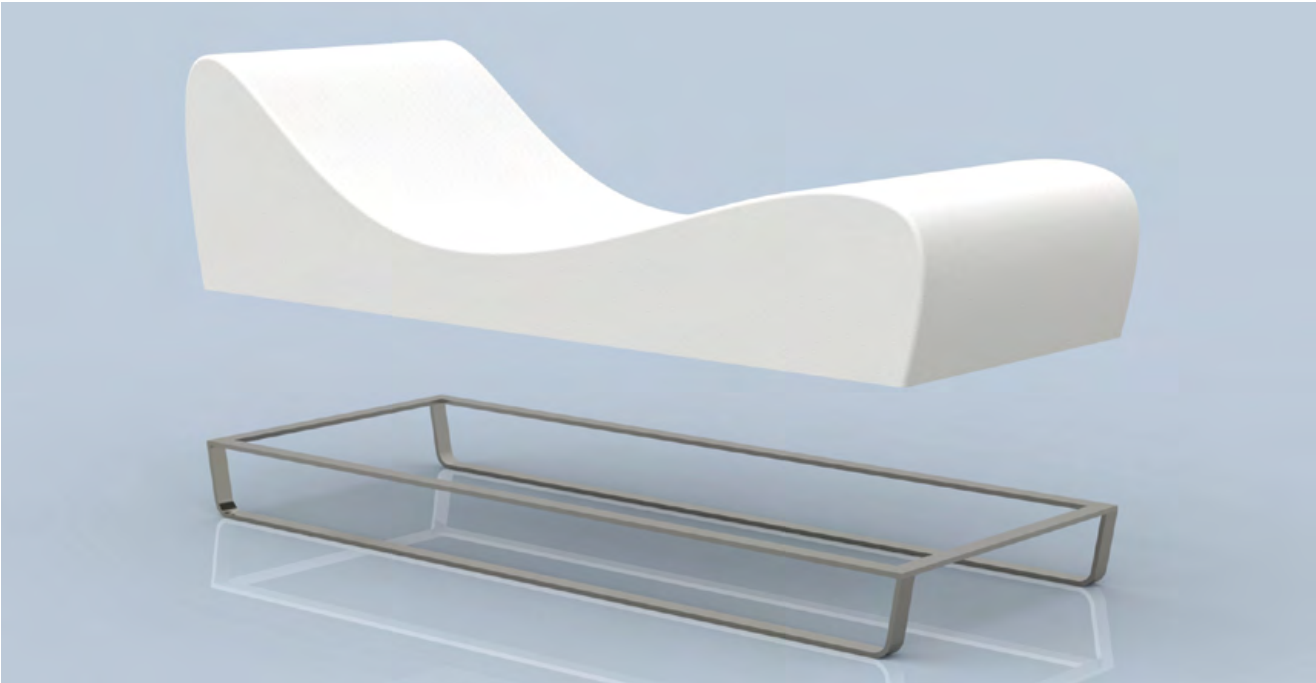
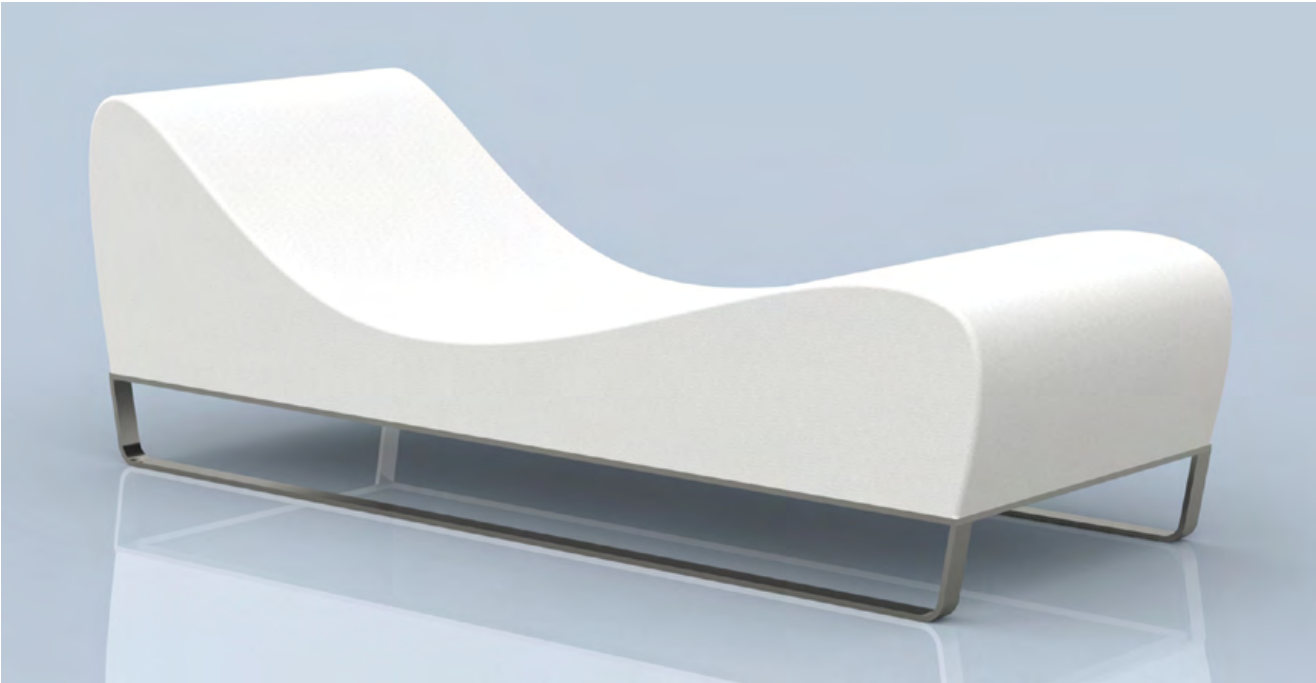
Abitex | Inca - 101      Abitex | Inca - 55      Abitex | Inca - 56      Abitex | Inca - 411      Abitex | Inca - 414      Abitex | Inca - 603  
\*to be defined

|                          |  |
|--------------------------|--|
| SIZES (cm)               | 144 x 72   |
| STRUCTURE                | Plywood and non-slip feets, 2 cm high.   |
| UPHOLSTERY               | Polyurethane highly resilient foam, covered in Dacron.   |
| WEIGHT                   | 32 kg  |
| USE                      | Internal.  |
| FABRIC                   | Inca 88% PVC - 6% PL - 6% CO      |
| CUSHION                  | Polyurethane highly resilient foam, covered in Dacron.   |
| CERTIFICATION CLASS 1 IM | Product certified in class 1 IM. Fireproof upholstery.   |







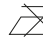


BED GRAN RELAX 1.0

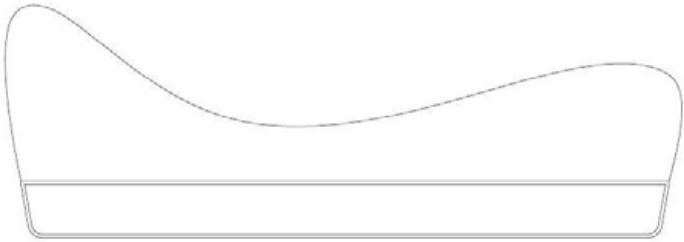


AVAILABLE COLOURS\*



Abitex | Inca - 101      Abitex | Inca - 55      Abitex | Inca - 56      Abitex | Inca - 411      Abitex | Inca - 414      Abitex | Inca - 603  
\*to be defined

|                          |  |
|--------------------------|--|
| SIZES (cm)               | 190 x 70   |
| STRUCTURE                | Plywood and aluminium base, painted in epoxy.  |
| UPHOLSTERY               | Polyurethane highly resilient foam, covered in Dacron.   |
| WEIGHT                   | 28 kg  |
| USE                      | Internal.  |
| FABRIC                   | Inca 88% PVC - 6% PL - 6% CO      |
| CERTIFICATION CLASS 1 IM | Product certified in class 1 IM. Fireproof upholstery.   |





BED GRAN RELAX 2.0



AVAILABLE COLOURS\*



Abitex | Inca - 101  
\*to be defined






Abitex | Inca - 55

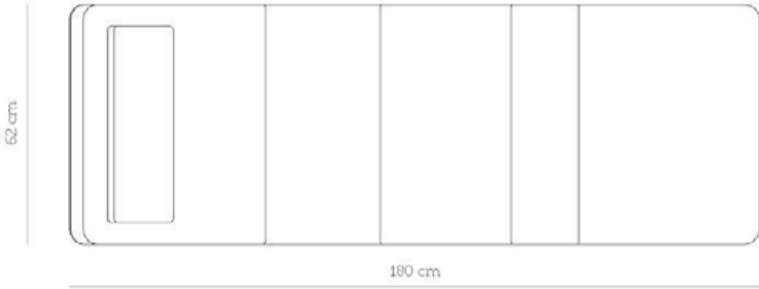
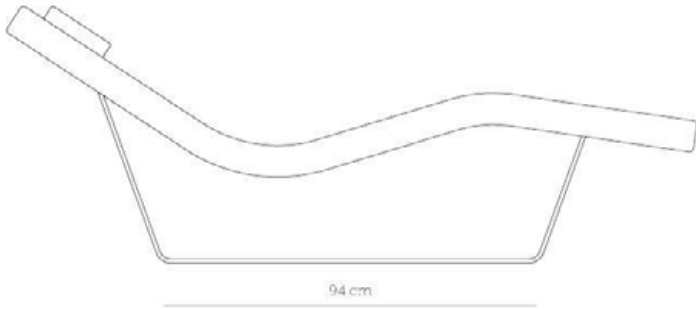
Abitex | Inca - 56

Abitex | Inca - 411

Abitex | Inca - 414

Abitex | Inca - 603

|                          |  |
|--------------------------|--|
| SIZES (cm)               | 180 x 62   |
| STRUCTURE                | Bent plywood and aluminium base, painted in epoxy.   |
| UPHOLSTERY               | Polyurethane highly resilient foam, covered in Dacron.   |
| WEIGHT                   | 22 kg  |
| USE                      | Internal.  |
| FABRIC                   | Inca 88% PVC - 6% PL - 6% CO      |
| CUSHION                  | Polyurethane highly resilient foam, covered in Dacron.   |
| CERTIFICATION CLASS 1 IM | Product certified in class 1 IM. Fireproof upholstery.   |










BED GRAN RELAX 4.0

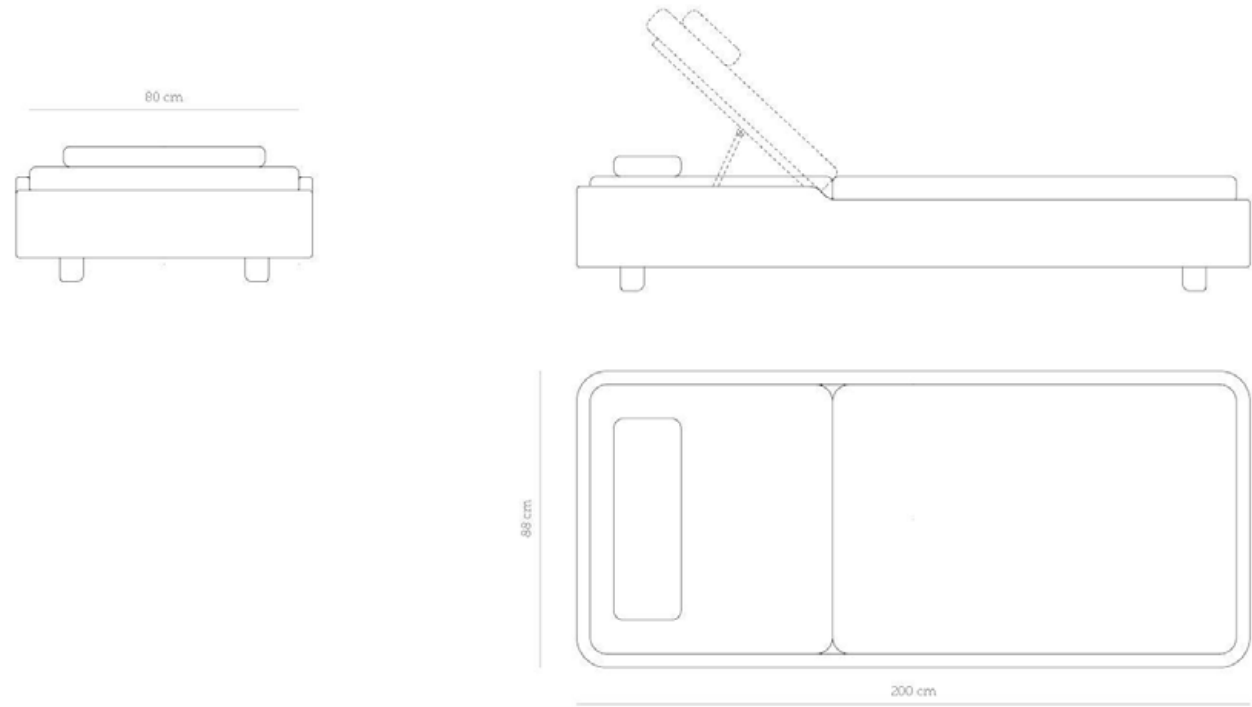


AVAILABLE COLOURS\*



Abitex | Inca - 101  
\*to be defined

|                          |  |
|--------------------------|--|
| SIZES (cm)               | 200 x 88   |
| STRUCTURE                | Plywood and non-slip feets, 4 cm high.<br>Back bending system in metal.  |
| UPHOLSTERY               | Polyurethane highly resilient foam, covered in Dacron.   |
| WEIGHT                   | 40 kg  |
| USE                      | Internal.  |
| FABRIC                   | Inca 88% PVC - 6% PL - 6% CO      |
| CUSHION                  | Polyurethane highly resilient foam, covered in Dacron.   |
| CERTIFICATION CLASS 1 IM | Product certified in class 1 IM. Fireproof upholstery.   |





# YOU CUBE

From the experience of Wellness facilities, **You Cube** was designed - the new open concept wellness area.

A **dynamic and flexible unit**, which is easily transported can **be fitted** within any **wellness facility** (sauna, Turkish bath, Jacuzzi, etc.).

You Cube is the **ideal solution for outdoors** with it's external structure in translucent, backlit materials, and resistant to any weather conditions.



\*The product images are not binding



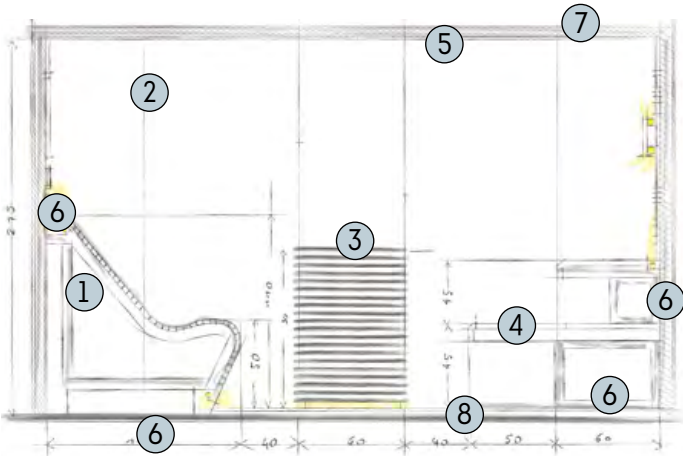
# ADVANTAGES

- Self-standing and completely prefab facility
- Ideal when the internal space is not enough
- A wellness area wherever you want
- Easy to be fitted
- Easily transportable
- Designed to withstand any kind of environment
- Resistant to any weather condition
- Variable sizes according to the spaces and requirements
- Customizable solutions
- Suitable to accommodate any type of wellness facility
- Backlit walls to create a unique atmosphere



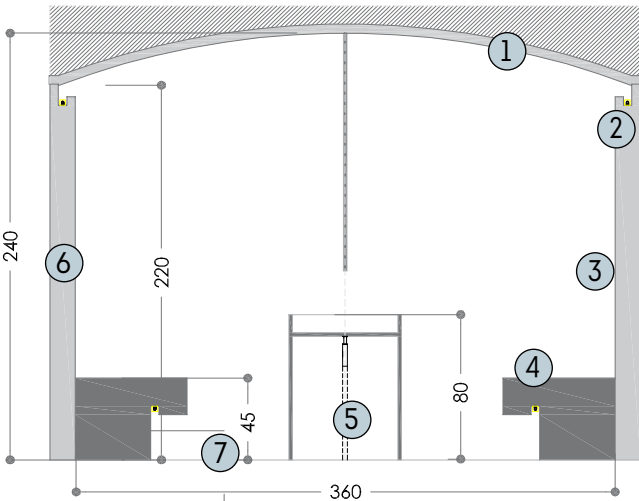
# WITH SAUNA

- 1 • Shaped chaise longue in thin Abachi wood slats
- 2 • Wall covering in porcelain stoneware
- 3 • Heat generator covered in baked ash slats
- 4 • Double bench covered in wide baked ash slats
- 5 • Ceiling and wall covering in wide baked ash slats
- 6 • Lighting with LED RGB bands
- 7 • RGB spots with standing high temperatures
- 8 • Floating flooring, 60 x 80 cm in porcelain stoneware



# WITH STEAM BATH

- 1 • Arched roof
- 2 • RGB lighting hidden behind the structure
- 3 • Coverings in ceramics
- 4 • Straight bench with fitted RGB lighting: seat in solid surface
- 5 • Heat source
- 6 • Shower
- 7 • Linear grid for the water draining







Via Solferino, 27 P.O. Box 7  
46043 Castiglione delle Stiviere (MN) - Italy  
T +39 0376 94261 - F +39 0376 631482  
[myrthawellness.com](http://myrthawellness.com)  
[info@myrthawellness.com](mailto:info@myrthawellness.com)